

SPONSORED TALK

Smart, sustainable, and low carbon: The future of HVAC management

Matteo Pierone
Managing Director
J2 Innovations



YOU







40%

of energy
consumption



36%

of CO₂ emissions in
EU



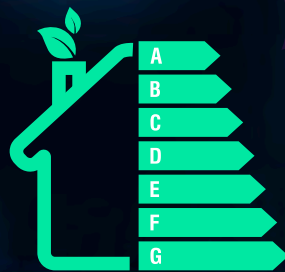
50% HVAC

20% Lighting

30% Others



- No or outdated BMS
- Very basic control, if any
- All in manual mode
- Fixed setpoint all year long
- Reactive maintenance
- No transparency

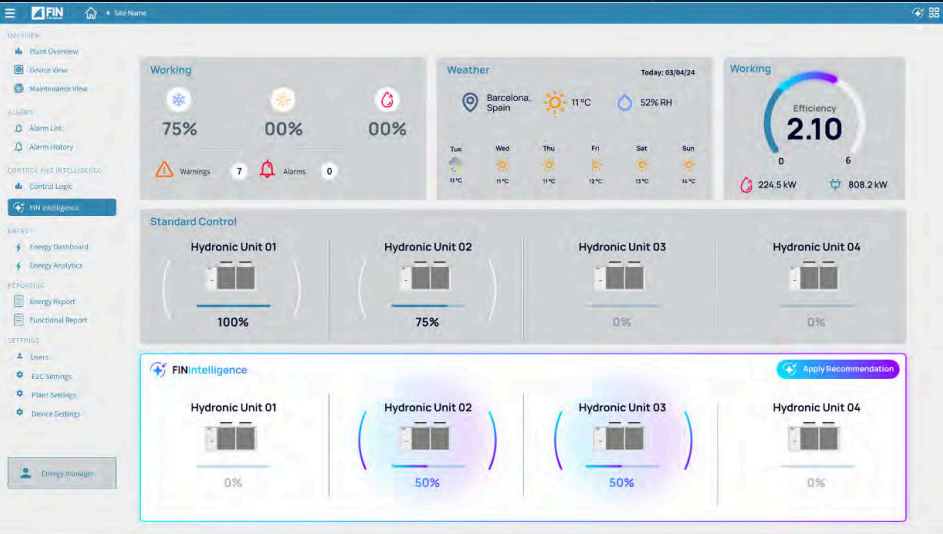


75%

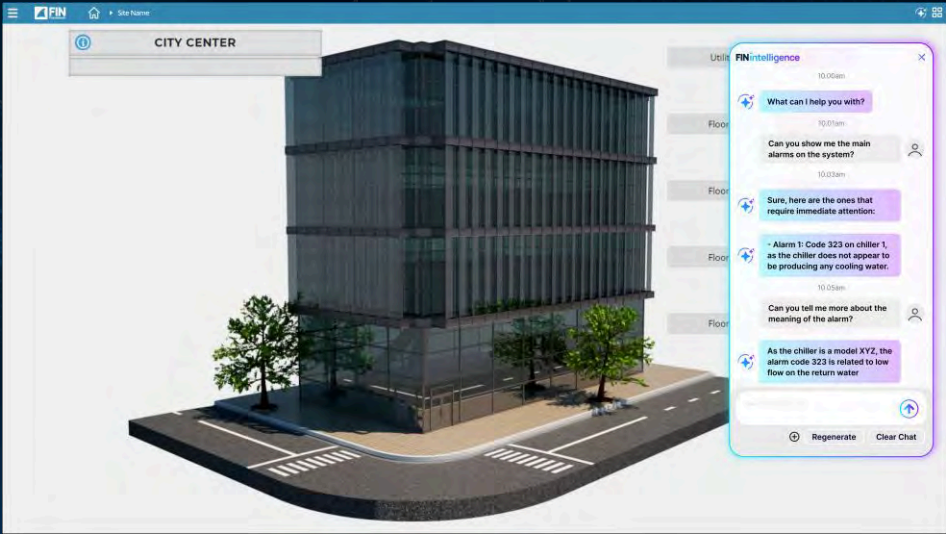
of the building stock
is energy inefficient



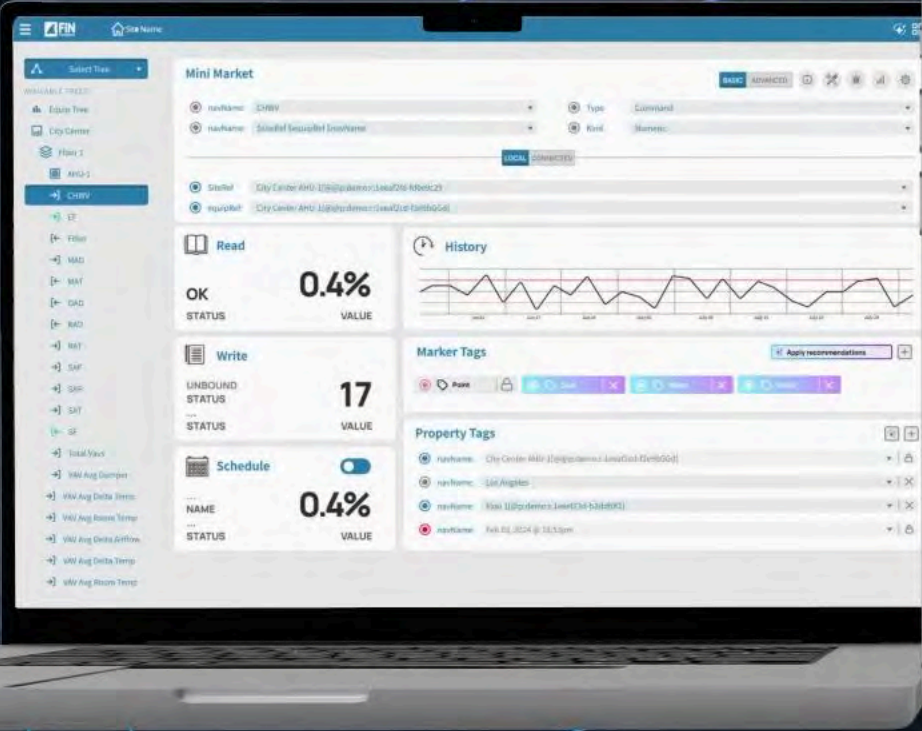
Generative AI for buildings and equipment



Intelligent Optimization



Intelligent Assistant



FINintelligence

10.00am

What can I help you with?

10.01am

Can you show me the main alarms on the system?

10.03am

Sure, here are the ones that require immediate attention:

- Alarm 1: Code 323 on chiller 1, as the chiller does not appear to be producing any cooling water.

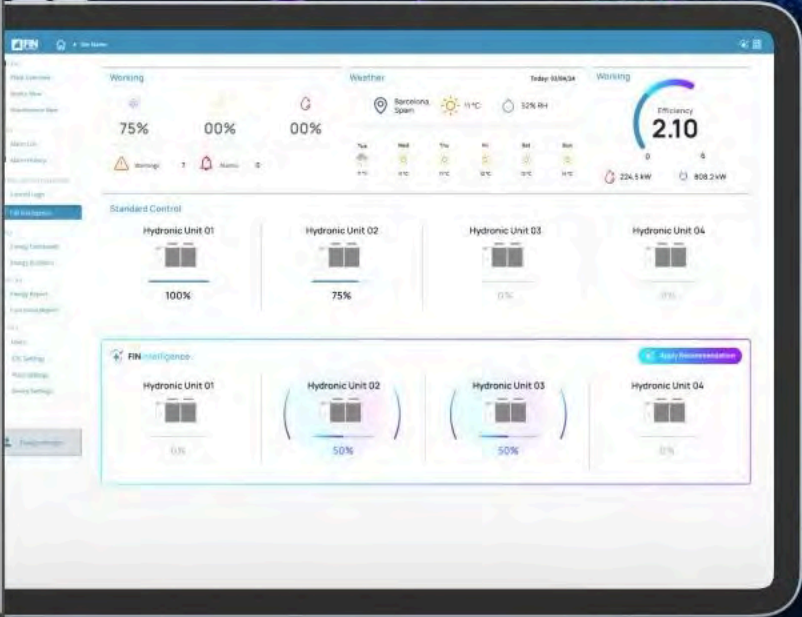
10.05am

Can you tell me more about the meaning of the alarm?

As the chiller is a model XYZ, the alarm code 323 is related to low flow on the return water

Regenerate

Clear Chat





Good for the planet



Differentiate yourself



Comply with regulations



Business opportunities



BE THE HERO

