

 **Global  
Gateway**



# **LIBERIA – EU BUSINESS FORUM**

## **Delivering Trade Efficiency under Liberia's ARREST Agenda**

**Presented by: GLS GROUP**

**Developer & Operator of the  
Monrovia Logistics Platform**



# AGENDA

- Why Trade Logistics Matters for Liberia–EU Cooperation
- The Structural Bottleneck in Liberia’s Trade Systems
- The Monrovia Logistics Platform: A System-Level Response
- What MLP offers
- Governance, Standards & Public Value
- GLS Group as Developer & Operator
- Investor Criteria
- Partnership Pathways & Next Conversations



# TOP 10 AFRICAN PARTNERS



TOTAL TRADE  
**€357BN**

# WHY TRADE LOGISTICS MATTERS?

- Liberia is a top-tier partner to the EU; a strategic Atlantic gateway for West Africa
- Ranks among the EU's top ten African trading partners (over €1B), with growing trade volumes and export ambitions.
- Reliable logistics systems underpin:
  - EPA and AfCFTA exports
  - Regional supply-chain resilience
  - Predictable trade costs and competitiveness


**“Trade efficiency increasingly depends on system-wide logistics design, not port operations alone.”**

# STRUCTURAL BOTTLENECK



- Liberia's Single-node port system struggles as trade volumes grow
- Import congestion, exports, empties, and overstayed cargo compete for the same limited space
- Operational excellence alone cannot solve structural capacity constraints
- Modern trade systems separate functions across complementary facilities

***“Congestion is a design challenge, not an institutional failure”***



# INTRODUCING THE MONROVIA LOGISTICS PLATFORM (MLP)

Safeguarding Liberia's Trade Future



GROUP

# THE MONROVIA LOGISTICS PLATFORM (MLP)

**MLP is an independent, private sector driven, logistics platform that expands capacity beyond the port gate**

*“MLP Strengthens Liberia’s Logistics Infrastructure Capabilities”*

- Overflow Management (ICD): Structured off-port container handling
- Export Processing Centre (EPC): Dedicated space for stuffing, inspection, and documentation
- Cargo Resolution Hub (ISDF): Transparent, bonded handling of overstayed cargo
- Air Cargo Gateway (RACC): EU-certified air freight handling supporting time-sensitive and high-value trade

**GLS Group:  
Developer &  
Operator**



GLS Group brings execution credibility (nationally significant logistics assets; **ISDF & RACC**)



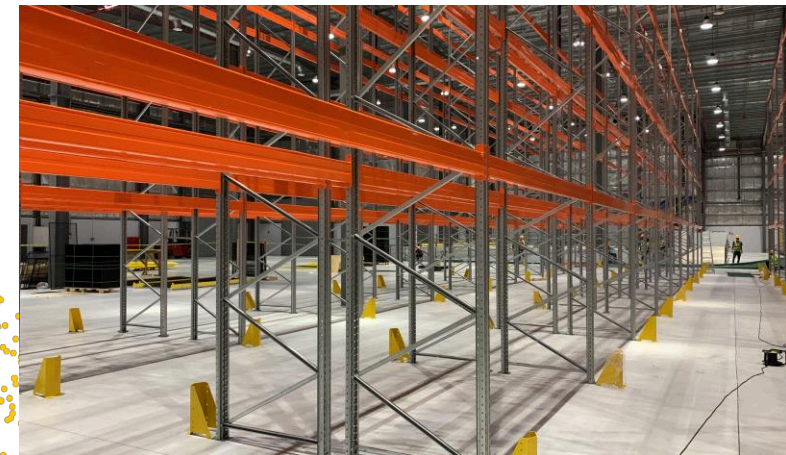
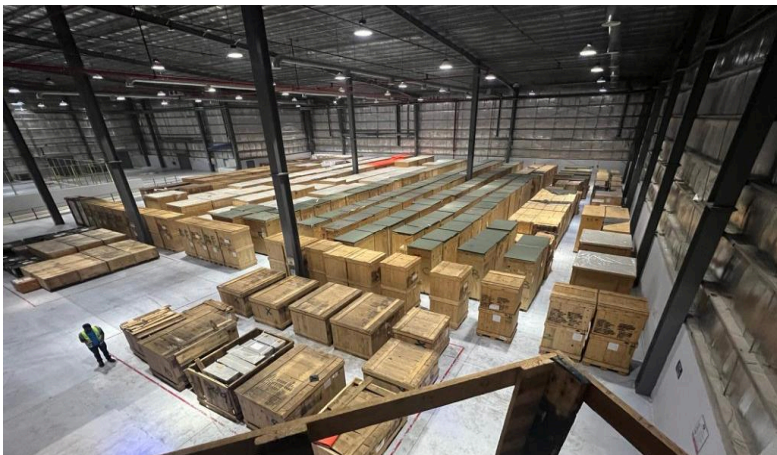
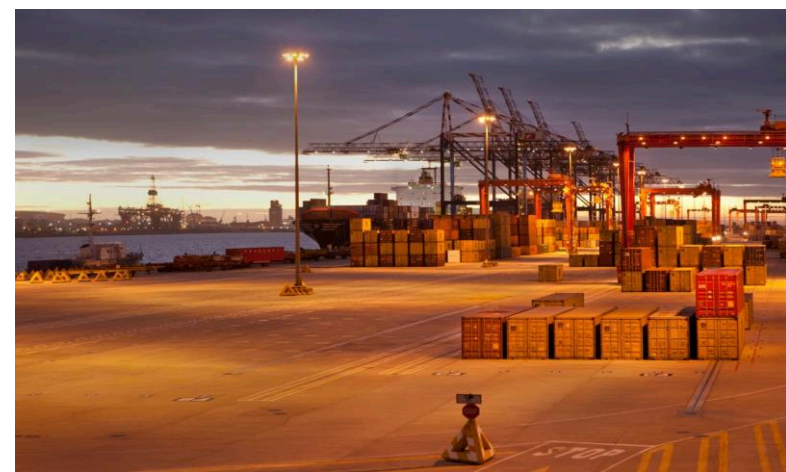
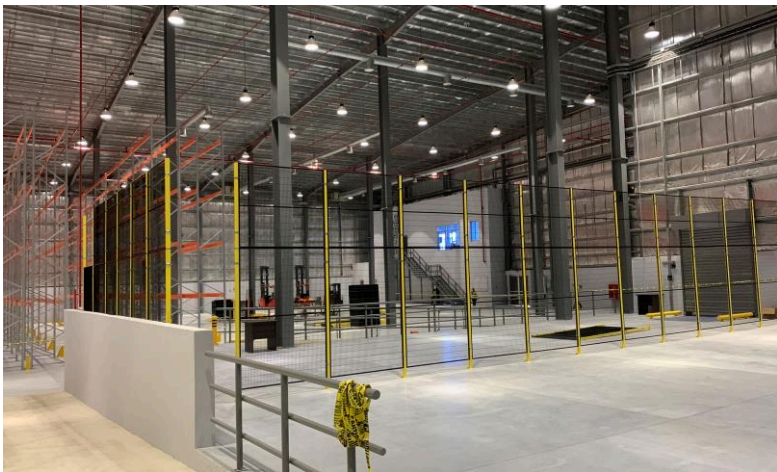
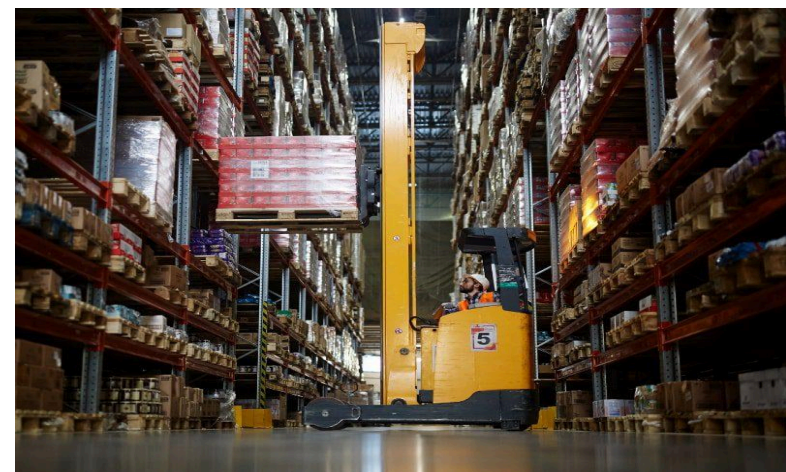
A consistent track record of investing in **green energy** (400+ MWh/year)



World class, international standards (**ISDF, GLS Menzies**)



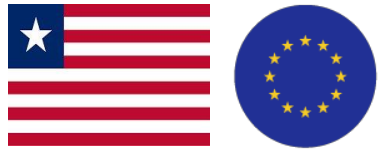
Dialogue involving public and private actors, & a track record of private capital deployment in public-interest infrastructure



# GOVERNANCE, STANDARDS & PUBLIC VALUE

**MLP aligns private execution with public-sector objectives, & operationalizes policy objectives through market-driven infrastructure.**

- Multi-agency oversight involving port, customs, and revenue authorities
- Transparent cargo handling, auditing, and traceability
- Improved revenue integrity and public accountability



**Alignment With ARREST & Global Gateway**

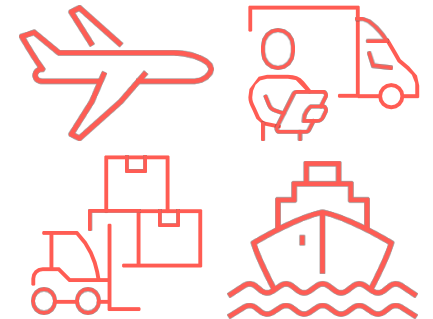
**MLP directly supports:**



**Private Capital Mobilisation:** Infrastructure delivered without public balance-sheet strain



**Infrastructure:** Multi-site, scalable trade systems



**Trade & Transport:** Efficient logistics and export enablement

MONROVIA PORT

MONROVIA LOGISTICS PLATFORM (MLP)



ICD  
EPC



ISDF

EMPTY

EMPTY



### APMT — National Decongestion



“Protecting the port’s operational stability and reputation.”

- ➔ Container buildup addressed
- ➔ Yard density reduced

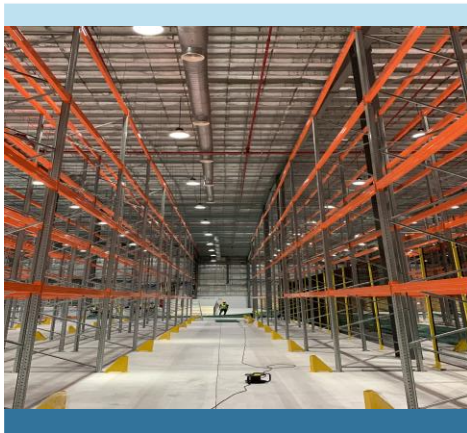
### ICD — National Overflow Mechanism



Ensuring Liberia never faces catastrophic yard congestion again.

- ➔ Systematic transfer of long-staying imports
- ➔ Export processing begins here

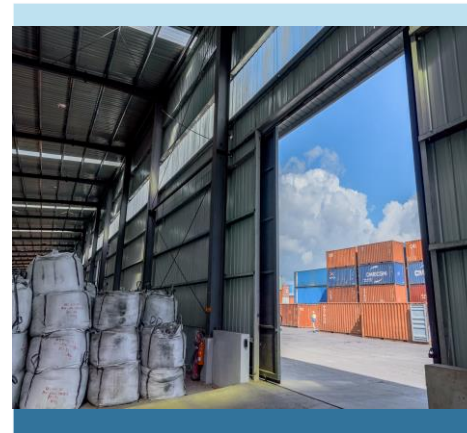
### ISDF — National Cargo Resolution Hub



“Restoring trust, transparency, and revenue integrity to overstayed cargo.”

- ➔ Overstayed cargo discharged
- ➔ Transparent auctioning
- ➔ Revenue accountability

### EPC — National Export Boost Platform



Enabling Liberian producers to compete regionally and globally.

- ➔ Stuffing, weighing, inspection, sealing, documentation

# WHY GLS GROUP?

MLP is built and operated by an institutionally mature private operator.

## Key Information

- 25-year concession at RIA
- Integrated logistics platform operating RACC and ISDF, with ICD and EPC developments underway
- World-class operational standards
- Proven execution capabilities
- Strategic partnerships
- Demonstrated Capital Mobilization
- **Liberian-owned** company
- Commenced operations in **2012**
- **120 employees** across the group
- Direct presence & affiliates in **10+ African countries**
- **Asset-backed**
- Annual revenues across the Group of circa **~\$5M/annum**
- Raised and directly **invested over \$25M** in Liberia within the last 5 years.

## PARTNERSHIPS



**National Port Authority**  
*The Gateway to Liberia's Economy*



*Lifting Global Trade..*

**APM TERMINALS**



Strategic Partners



Key Clients



Financing Partners



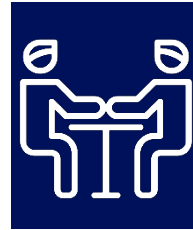
# INVESTOR CRITERIA

We seek long-term capital and strategic partners aligned with scalable logistics infrastructure, disciplined governance, and sustainable value creation.



## Financing

- Up to \$20 million in equity and long-term debt (including convertible instruments with 7–10 year tenors)



## Strategic Collaboration

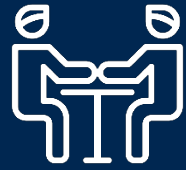
- Global Network
- Industry Knowledge and Credibility



## Future growth

- Scalability
- Flexible exit options

# PARTNERSHIP PATHWAYS



- Policy alignment and technical cooperation to support trade facilitation, export competitiveness, and logistics reform
- Pilot programs for export readiness and corridor development, anchored in operational assets
- Dialogue on replication, regional scaling, and portfolio-level investment models



- DFI engagement across trade, export infrastructure, and logistics platforms, including debt, guarantees, and blended finance instruments
- Strategic and financial partnerships to support the next phase of platform expansion, asset consolidation, and long-term capital structuring

## Next Steps

1. Execution of an NDA,
2. GLS sharing a detailed project brief covering the Monrovia Logistics Platform (MLP) and International Cargo Village (ICV).

*[MLP's existing assets (ISDF, RACC) with planned developments including ICD/EPC, and the development of the ICV]*

# CLOSING THOUGHTS...

The Monrovia Logistics Platform demonstrates how private-sector logistics platforms can deliver national trade outcomes — transparently, scalable, and in alignment with public policy.

Thank you.



GROUP

