

Critical Raw Materials

Paz Velasco Velazquez, Head of Unit

Unit E2 - Trade, Investment Climate, Entrepreneurship & Value Chains

DG INTPA - Directorate General for International Partnerships



Critical Raw Materials Act

Ensuring a secure and sustainable supply of critical raw materials for the EU



Strengthen all stages of the European CRM value chain



Diversify EU CRM imports to reduce strategic dependencies



Improve EU capacity to monitor and mitigate risks of disruption to CRM supply



Improve CRM circularity and sustainability

2030 BENCHMARKS

Towards more SRM supply security

- EU's extraction capacity cover **at least 10%** of the EU's SRM consumption
- EU's processing capacity cover **at least 40%** of the EU's SRM consumption
- EU's recycling capacity cover **at least 25%** of the EU's SRM consumption

Towards more diversification of supply

- **Not more than 65%** of EU consumption of each SRM should come from a single third country.



RESourcEU Action Plan

- Accelerate the efforts to achieve the Critical Raw Materials Act objectives.
- Focus on battery, rare earth elements, and defence value chains

Concrete measures (3Ps):

1. **Partner** with likeminded countries for strong and diversified supply chains
2. **Promote** CRM projects through financial de-risking
3. **Protect** EU industry from market deficiencies and shocks

Concluding Strategic Partnerships

- Part of the external dimension of the CRMA
- Based on **mutual benefits**: focus on developing local processing/refining capacities
- Covering the **entire raw materials value chain**, from exploration to recycling
- **KEY**: identify projects of strategic EU interest

5 pillars of cooperation:



→ Framework of the **Global Gateway** strategy, implemented in a **Team Europe approach**

EU Strategic Partnerships on raw materials value chains

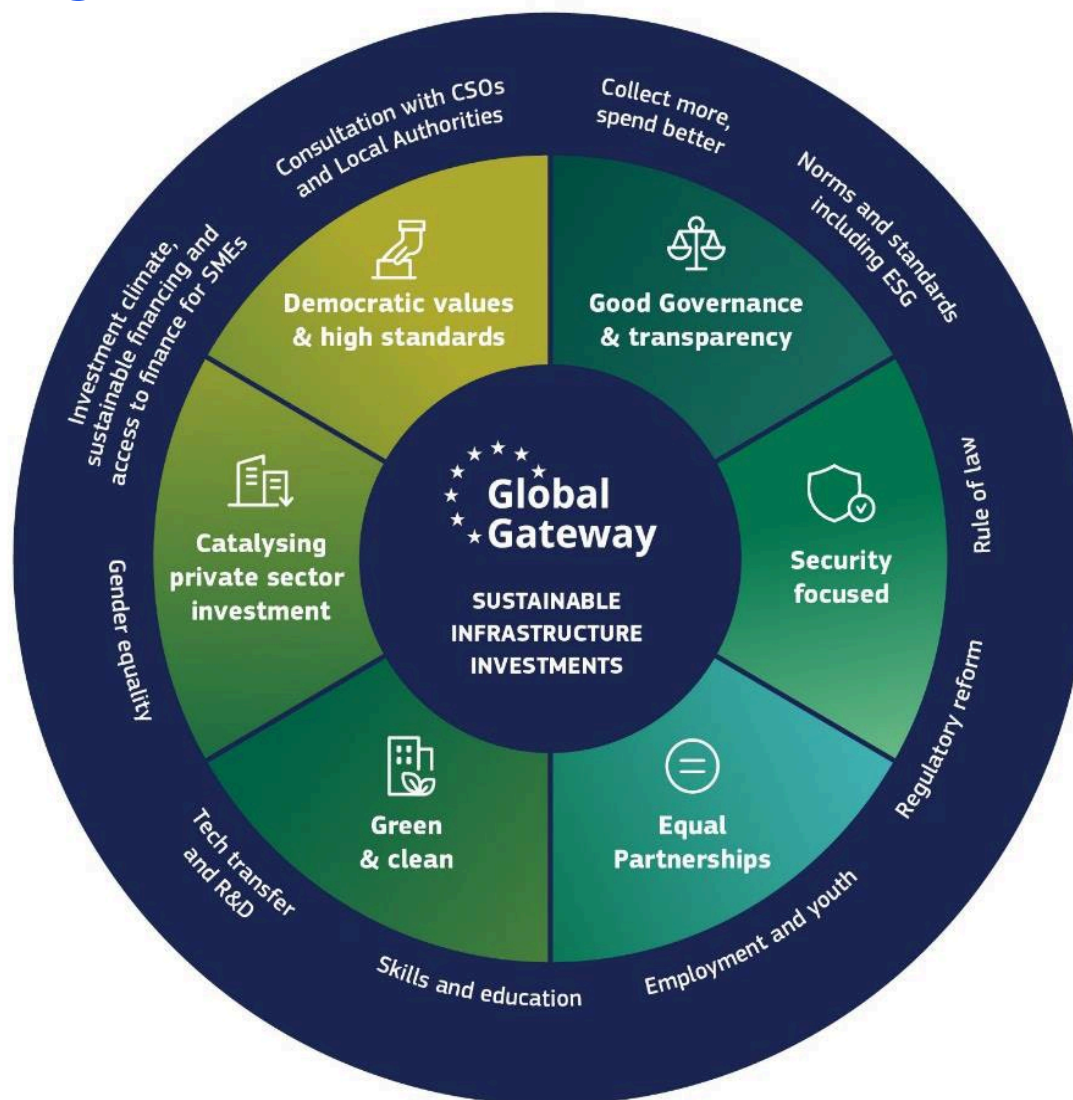


How is Global Gateway implemented?

Mobilise Team Europe investments to **de-risk private sector investment** through:

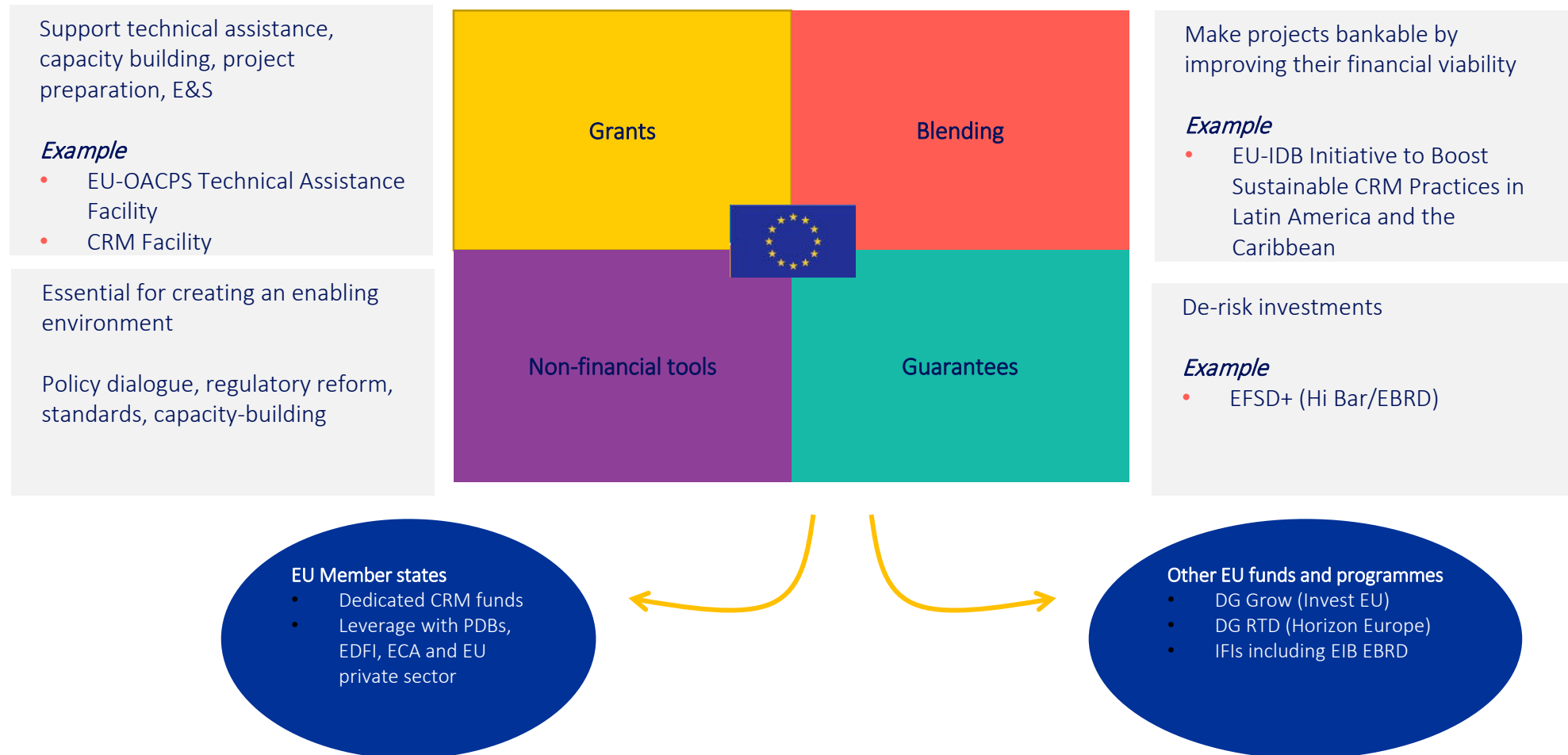
- European Fund for Sustainable Development (EFSD+)
- Grants
- Operational tools: technical assistance, policy and economic dialogue...
- Investments the whole ecosystem around the extractives sector (i.a. green energy, training and skills, infrastructure)

→ **360° approach**



The 360-degree approach

Global Gateway Toolbox





CRM in Liberia

- Liberia is a resource-rich country
- Great potential on CRM, mainly in battery value chain
- Important to further explore these resources

Iron Ore

Lithium

Bauxite

Turile and Ilmenite

Gold

Nickel

Diamonds

Rare Earth Elements

Graphite

In **red** non CRM

In **green** CRM



Thank you!

