



# **From Mandate to Momentum:**

**The**

**Liberia Special Economic Zones Authority Journey  
(LSEZA)**



**T**

**THINK TRADE**

**A**

**ATTRACT  
INVESTMENT**

**P**

**PROVIDE NEW  
JOB OPPORTUNITIES**





**H.E. JOSEPH NYUMA BOAKAI, SR.**  
**PRESIDENT**  
**REPUBLIC OF LIBERIA**

# LSEZA FOREWORD



**Hon. Prince Wreh**  
Executive Chairman  
Liberia Special Economic Zones Authority

The establishment of Special Economic Zones (SEZs) stands to be a game changer for Liberia - creating a structured, investor-friendly environment that fosters business growth, enhances commodity processing, and stimulates job creation.

One of our key priorities has been to establish a seamless and efficient business ecosystem, anchored by our One-Stop Shop framework. This initiative is designed to streamline regulatory processes, including business registration, licensing, tax administration, and investment approvals, thus ensuring that both domestic and foreign investors can operate with ease and confidence.

As we move into the New Year, LSEZA remains committed to delivering on its mandate by fostering strong public-private partnerships, enhancing infrastructure development, and unlocking Liberia's full potential in agriculture, manufacturing, and value-added industries.

Our vision is clear—to transform Liberia into a regional hub for trade, investment, and industrial growth.

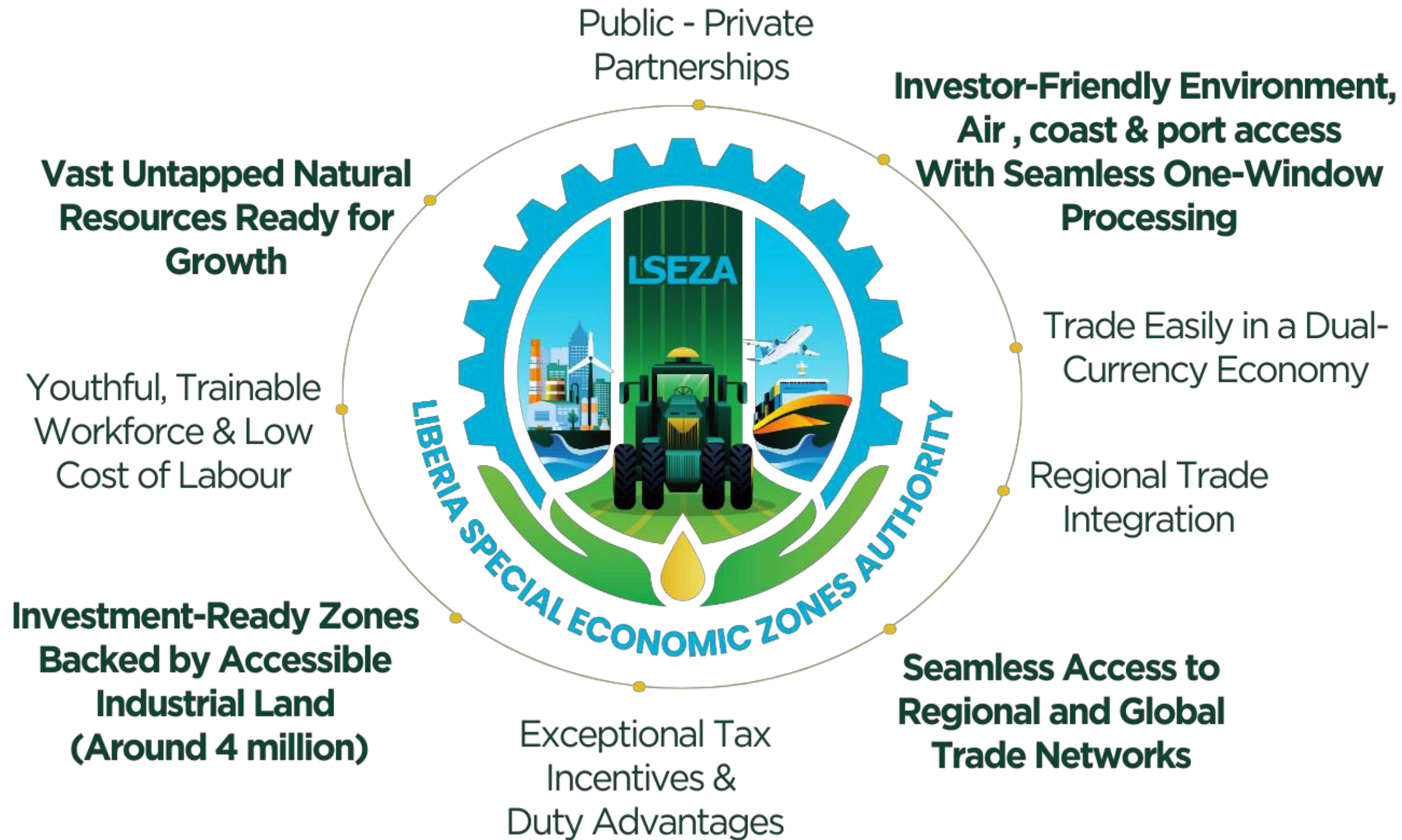
**Think Trade, Attract Investments, Provide Job Opportunities-TAP**

**Warm regards,**

# ACRONYMS

- **AAID : ARREST Agenda for Inclusive Development**
- **ATC: Agriculture Transformation Centers**
- **LSEZA : Liberia Special Economic Zones Authority**
- **LIZFA : Liberia Free Zone Authority**
- **MOCI: Ministry of Commerce and Industry**
- **MOU: Memorandum Of Understanding**
- **OSS: One- Stop-Shop**
- **SEZ: Special Economic Zones**
- **SAPZ: Special Agro-Processing Zone**
- **TAP: Think Trade, Attract Investment, Provide new Job Opportunities**

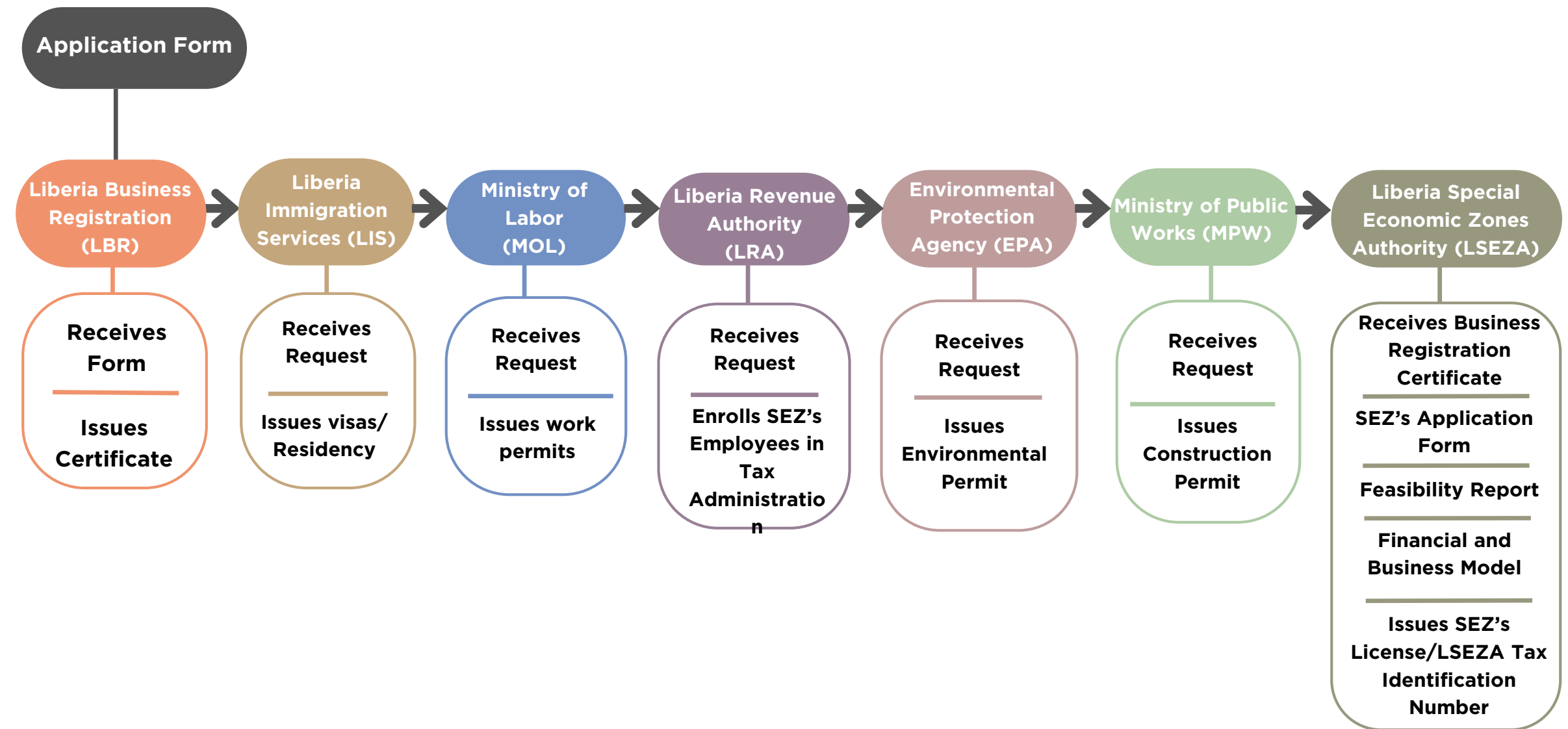
# WHY INVEST IN LIBERIA'S SPECIAL ECONOMIC ZONES (SEZs) ?





The OSS brings together key government agencies and services under one coordinated platform both physical and digital to reduce bureaucracy, eliminate delays, and ensure efficient service delivery.

# FLOW CHART & COORDINATION Of OSS (ONE-STOP-SHOP)



Processing Time : 72 HOURS

# What We Offer - Tax Incentives

<b>Taxation</b>	<b>Fees</b>	<b>Waiver</b>
<b>Customs &amp; Trade Duties</b>	<b>0%</b>	<b>100% exemption from national customs import duties, internal duties, levies, tariffs, and trade-related</b>
<b>Standard SEZ Tax (Years 1-5)</b>	<b>10%</b>	<b>N/A</b>
<b>Standard SEZ Tax (Rest of Agreement)</b>	<b>20%</b>	<b>N/A</b>
<b>Large Investment (<math>\geq</math> \$25M) (Years 1-5)</b>	<b>5%</b>	<b>Reduced tax rate for large investors</b>
<b>Large Investment (<math>\geq</math> \$25M) (Rest of Agreement)</b>	<b>15%</b>	<b>Reduced tax rate for large investors</b>
<b>Reinvestment of Profits</b>	<b>8%</b>	<b>Reduced rate applied if 100% of profits are reinvested in the same SEZ enterprise</b>
<b>Off-site Infrastructure Development</b>	<b>25% tax deduction</b>	<b>Waiver through special tax credit</b>
<b>Research &amp; Development Investment</b>	<b>50% tax deduction</b>	<b>Waiver through special tax credit</b>



Approved in collaboration with the Liberian Revenue Authority via a signed Memorandum of Cooperation (MOC)

# Monrovia Free Zone - Port Driven Manufacturing Hub

- ❖ 93.826 acres adjacent Monrovia Freeport
- ❖ 9 pre-built warehouses (13,000–18,000 sq. ft.)
- ❖ Near-zero logistics distance to shipping
- ❖ Expandable industrial land for factories & terminal
- ❖ Land Lease Rates (per square foot/year):
  - \$0.50 – \$0.75( Developed)
  - \$0.35 - \$0.50 (Undeveloped)



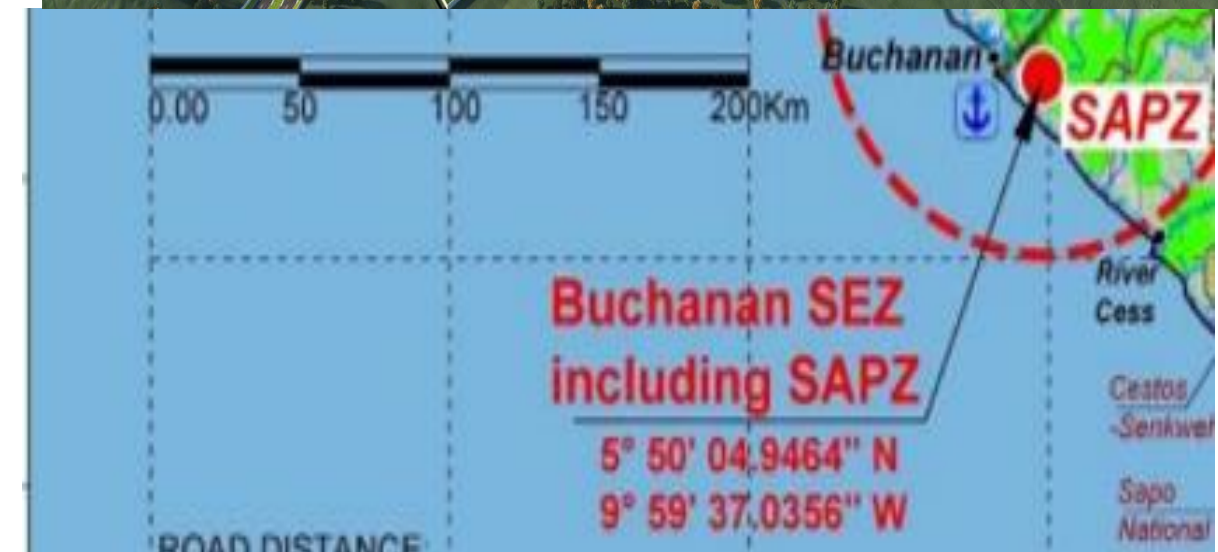
## Monrovia Free Zone Coordinates

- ✓ Eastern 302217 m E/ Northern 702684 m N  
North 48° East 80 Feet to a point, North 03°  
East 1770 feet  
South 76°21' 56" West 1770 Feet to a point,  
South 42° West 220.7 Feet  
South 66° West 920 Feet to a point, South 86°  
East 1873.8 Feet

# Buchanan SEZ- SAPZ

## (Special Agro-Industrial Processing Zone( 631 Hectares)

- ❖ 631 hectares of which 210 hectares dedicated strictly to agro-processing , value addition
- ❖ Processing clusters for cocoa, palm, cassava, rice, livestock, aquaculture & fruits
- ❖ Forward & backward linkages for farmers, processors & exporters
- ❖ With funding from the AfDB-OPEC fund, the ATCs will provide Storage capacity for produce and value addition at the Buchanan Agro-Processing Park.
- ❖ Government of Liberia commitment to jumpstart the project:
  - the Resettlement Action Payments (RAP) to affected communities (completed).



# Roberts International Airport SEZ (200 Acres)

- ❖ Strategic Atlantic Gateway to West- Africa with direct air access to major global trade routes, i.e.: Monrovia- Brussels : 6 - 7 hours
- ❖ Direct logistics movement
- ❖ Anticipation of infrastructure expansion
- ❖ Land Lease Rates (per square foot/year) :
  - \$0.40 – \$0.65

TOPOGRAPHICAL SURVEY PLAN SHEWING LAND EARMARKED FOR HOUSING ESTATE AT ROBERT INTERNATIONAL AIRPORT MAGIBI COUNTY REPUBLIC OF LIBERIA  
 AREA 43.54 Ha, 107.58 ACRES  
 SCALE: 1:1000  
 UTM ZONE 29N WGS84  
 CONTOUR INTERVAL 0.5m



PT10 TO PT11	05.06m	194°59'
PT11 TO PT12	29.32m	179°16'
PT12 TO PT13	18.69m	172°51'
PT36 TO PT37	34.74m	28° 48'
PT41 TO PT42	41.18m	75° 54'
PT42 TO PT43	22.03m	81° 12'
PT43 TO PT44	20.80m	84° 43'
PT47 TO PT48	30.86m	78° 12'
PT48 TO PT49	24.75m	64° 58'
PT49 TO PT50	21.53m	59° 49'
PT50 TO PT51	19.30m	48° 02'
PT51 TO PT52	28.51m	34° 55'
PT52 TO PT53	25.71m	25° 15'
PT57 TO PT58	33.44m	03° 08'
PT70 TO PT71	20.07m	73° 11'
PT71 TO PT72	23.07m	79° 06'
PT72 TO PT73	26.92m	76° 04'
PT73 TO PT74	25.71m	89° 23'
PT74 TO PT75	19.48m	109° 34'
PT75 TO PT76	09.40m	44° 44'
PT76 TO PT77	08.82m	345° 29'
PT77 TO PT78	14.19m	18° 08'
PT78 TO PT79	16.37m	43° 16'



# Proposed Special Rubber Processing Zone (SPRZ)

- ❖ Rubber is Liberia's second-largest export earner after iron ore; It occupies an estimated 200,000 ha of which 65,000 are industrial estates and 130,000 are small and medium-size farms.
- ❖ Potential for Liberia to be the first latex gloves manufacturer in the Mano River Union basin (Liberia, Guinea, Sierra Leone, Cote D'Ivoire), thereby creating 2,000+ more jobs.
- ❖ A proposed Special Rubber Processing Zone (SRPZ) will build domestic capacity for processing TSR, RSS + high value manufactured rubber based products (prophylactics, footwear, utensils, etc...).



# Green Education City

- A flagship SEZ project integrating education, housing, and sustainability: providing a living ecosystem for green innovation and a symbol of Liberia's transformation services with SEZ status.
- Seek for offshore, accredited satellite campuses with climate smart self-contained academic city .
- Proposed location, University of Liberia, Fendell Campus.



Campus

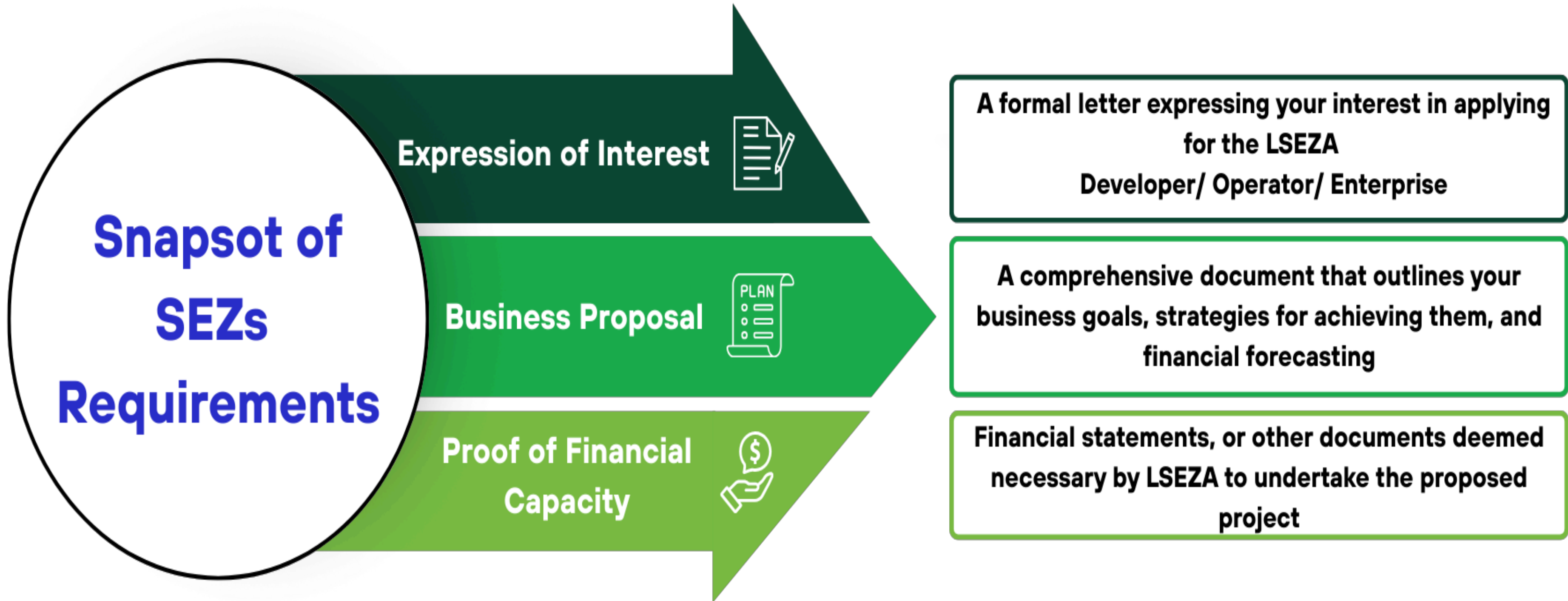


Sustainable buildings



Green City

# SEZs Investment Model




# Future Outlook

- Land Acquisition: Bomi, Grand Bassa, Cape Mount and Margibi counties (for Tourism).
- Regional Integration: Strengthen ties via ECOWAS trade agreements.
- Become a member of the African Economic Zones Organization(AEZO).
- Publish Implementing Regulations via national gazette.
- Complete proposed zones infrastructure master plans & Feasibility Studies.
- Mobilize funding for infrastructure rollout.
- Expansion of donor and private sector funding.
- Build & strengthen local SME partnership & investment
- Grand Bassa University support from SEZ and potential zones for job creation.

**Continue to Think Trade, Attract Investment and Provide New Job Opportunities**

# Contact Us

 +231888229122

 [www.liberiaseza.gov.lr](http://www.liberiaseza.gov.lr)

 [info@liberiaseza.gov.lr](mailto:info@liberiaseza.gov.lr)

 Old Road, VP Road, Monrovia, Liberia

