



DATA-DRIVEN SOLUTIONS FOR RAILWAY EXCELLENCE

WHO TRULY LEADS THE GAME:
**BUSINESS SHAPING TECHNOLOGY, OR
TECHNOLOGY REDEFINING BUSINESS?**

HIGHLY OFFSHORED ACTIVITY

ADVANCED ANALYTICS FOR CRITICAL COMPONENTS

+20.000



MASTER
CONTROLLER

+8.000



HVAC

+60.000



COMPRESSOR

DOORS



PANTOGRAPH

TRACTION
CONVERTER



ACR



ENGINE

+800



BOGIE

+20.000



BRAKES



BATTERY



WHEELSET

+40.000 AXLE
+80.000 WHEELS

WE OPERATE IN

20

COUNTRIES

+150

CONTRACTS

+30

SUBSIDIARIES

+100

MAINTENANCE CENTERS

12K

CARS

4K

PEOPLE&TALENT

TECHNOLOGY SERVING BUSINESS

ADDRESSING KEY CHALLENGES OF OPERATORS & MAINTAINERS



**SERVICE
EXCELLENCE:**
PUNCTUALITY,
AVAILABILITY,
SAFETY

Every delay impacts **passenger trust** and **operator reputation**, making reliability non-negotiable.



**ASSET
OPTIMIZATION:**
HIGH VALUE,
MINIMAL DOWNTIME

Rail assets are expensive and critical. The challenge is: **keep them in service**, not in the workshop.



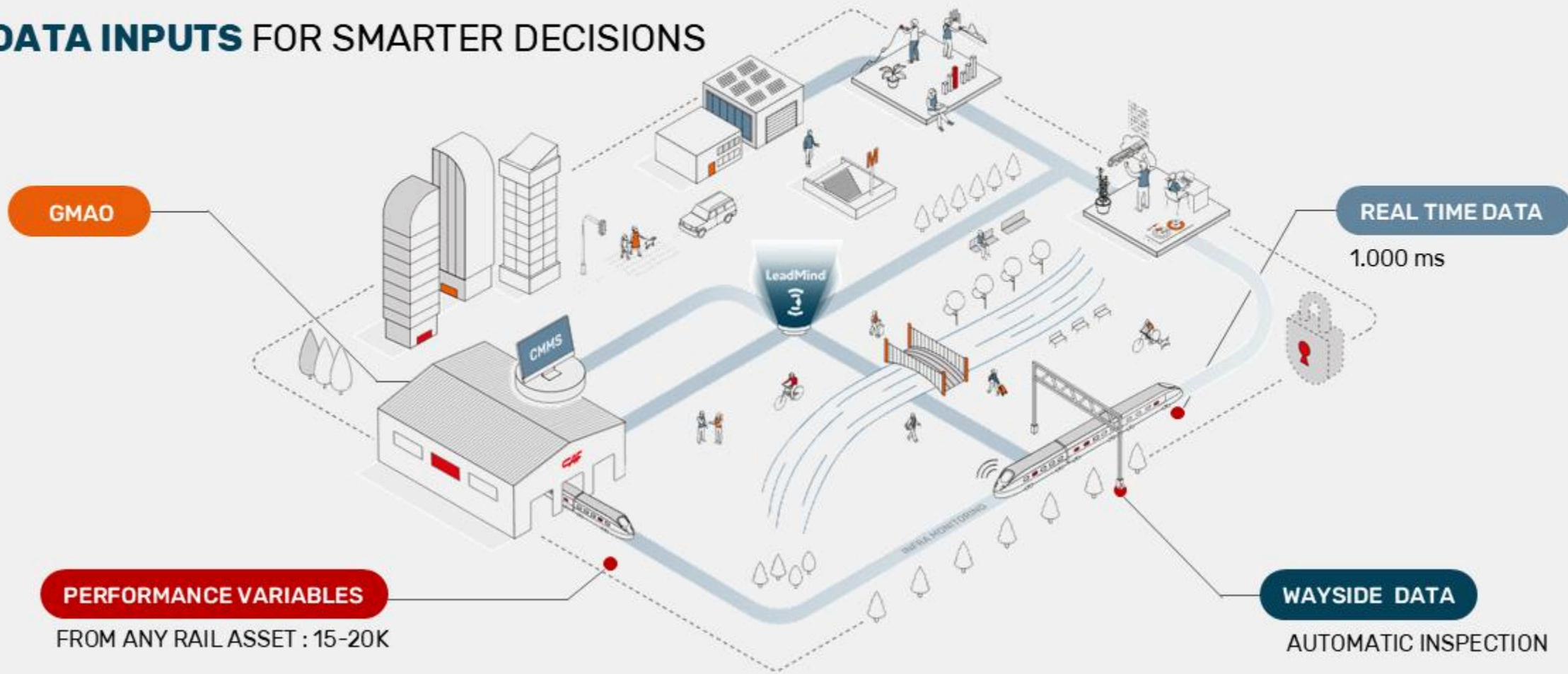
SMART OPERATIONS:
FROM REACTIVE
FIREFIGHTING TO
PROACTIVE

Seamlessly orchestrating operations through **real-time insights, predictive planning, and smart prioritization**.

HOW DO WE OVERCOME THESE CHALLENGES?

▶ DRIVING SOLUTIONS: BETTER DATA, SMARTER DECISIONS

DATA INPUTS FOR SMARTER DECISIONS



➤ REAL TIME FLEET HEALTH CONTROL: FLEET STATUS AND ALARMS, EMPOWERING DEPOT & OPERATIONS TEAMS



PROVINCIE UTRECHT

"LeadMind gives us all necessary operational information regarding the behaviour of the trams, **A QUICK OVERVIEW OF THE FLEET HEALTH**. The advantage is that we get clear, correct, accurate and real time information about the trams. **WE CAN READ THE TRAM FROM A DISTANCE**"

Kees van de Groep, Process Manager Assets Rolling Stock



CALEDONIAN SLEEPER

"Serco Caledonian Sleeper now have the ability to use real time data from LeadMind to monitor the fleet in service to **IDENTIFY ISSUES AND PROVIDE AN IMPROVED LEVEL OF ENGINEERING SUPPORT** to our Train Managers."

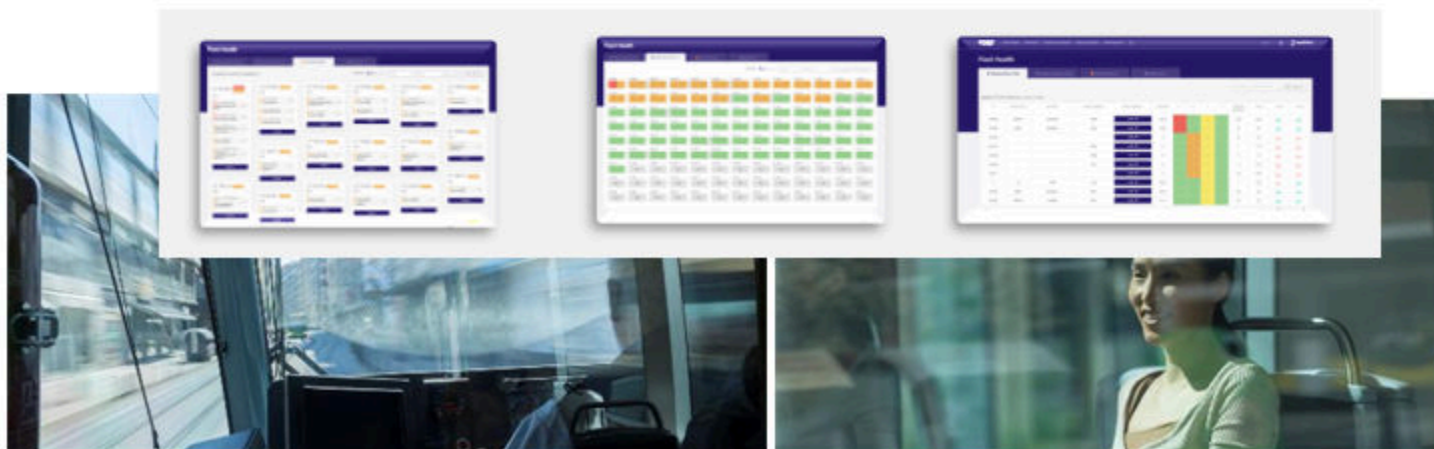
Graham Eastwood, Head of Depot Contracts.



NSW Transport RailCorp

"The track to train connectivity allows use of **REAL TIME DIAGNOSTIC** tools through allowing operators and maintainers to provide the **SAFEST AND MOST RELIABLE SYSTEM POSSIBLE FOR THE NETWORK**. Since introduction Canberra Light Rail have enjoyed the use of the real time system and data logging to the benefit of all."

Andrew Pearce, Director Of Engineering Canberra Metro Operations at CMET.



- / REDUCTION OF **OPERATIONAL DELAYS**
- / IMPROVED **OPERATING ASSISTANCE**
- / REDUCTION OF **OPERATIONAL INCIDENTS**

▶ TRANSFORM DATA INTO BUSINESS BENEFITS: OPERATIONAL INSIGHT FOR MULTIPLE NEEDS

✓ EFFICIENCY - DRIVER PERFORMANCE



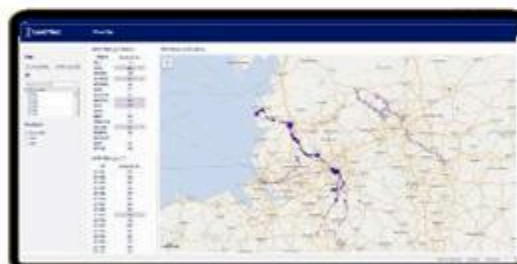
✓ CAPACITY MANAGEMENT - PASSENGER OCCUPANCY



✓ SAFETY - SPEED MONITORING



✓ SAFETY - WHEEL SLIP



✓ ENERGY EFFICIENCY

MANAGEMENT,
CONTROL & ANALYSIS



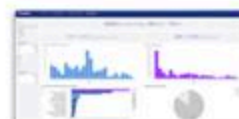
DRIVING STRATEGIES



CATENARY RECEPTIVITY



OUT-OF-SERVICE
TRAIN ENERGY



SAFETY - SPEED MONITORING

"We are delighted to be working with CAF, to introduce this leading-Edge technology to alert our drivers to **overspeed conditions**. The alerts will allow the driver to react and control the tram vehicle thereby enhancing our already safe operation to human error events"

Colin Kerr, Head of Safety & Projects.



SAFETY - WHEEL SLIP

"**Operational safety** is the most important aspect of UK railways, and LeadMind enables a **more controlled, digital approach**. We use wheel rotations to determine safe door operation and identify low adhesion areas. The wheel slip dashboards highlight hotspots, allowing Network Rail teams to clean the rails and prevent future issues."

David Curtis, Onboard Systems Service Delivery Manager at Northern

THE PATH TO PREDICTIVE EXCELLENCE

DATA-DRIVEN PERFORMANCE IS ACHIEVED BY INTEGRATING
TECHNOLOGY, CULTURE, PROCESSES, AND PEOPLE





ACTREN

"There is a real commitment to the digital transformation with LeadMind, CAF's digital platform. It is allowing us to perform real-time asset maintenance as well as advanced analytics for predictive and condition-based maintenance."



Gorka Macías
Maintenance Engineering Director.

RELIABILITY IMPROVEMENT



SAVINGS

44%

In the used materials due to anticipation before catastrophic breakdowns occur which involve high cost of materials.

IMPROVEMENT

50%

Mean time to repair (a reduction of 8 h to 4 h in the execution of a corrective task)

REDUCTION

20%

In hours dedicated to corrective actions

CPTM

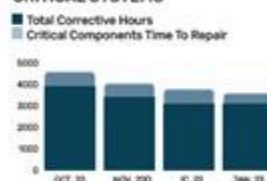
"In the short term we have had very relevant results. In addition, the tool is intuitive and easy to use and the different functionalities show the data at a glance. LeadMind makes day-to-day work more dynamic and decision making easier. Moreover, as time goes by, you gain expertise (knowledge) and the benefits get better and better."



Cleverson Rodrigues
Operations Director at Ctrens



EVOLUTION OF REPAIR TIME FOR CRITICAL SYSTEMS



LEADMIND HAS DELIVERED SIGNIFICANT BENEFITS AND SAVINGS IN CORRECTIVE ACTIONS IN JUST FOUR MONTHS

15% IMPROVEMENT

In the total number of failures due to the anticipation of failures through early corrective actions.

IMPROVEMENT

209%

IN RB REVISION TIMES (ON AVG)

IMPROVEMENT

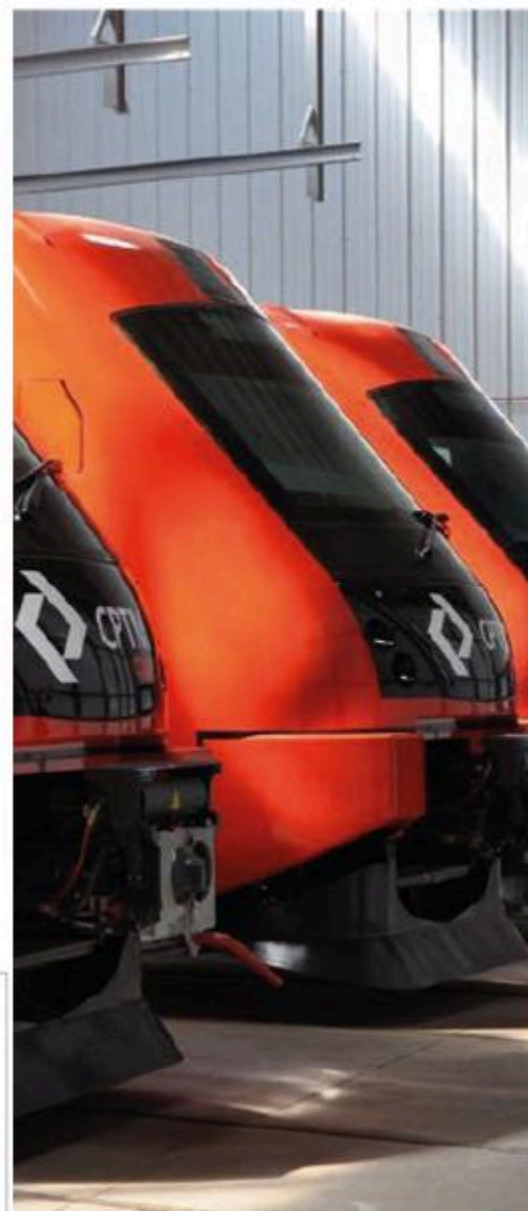
69%

IN RA REVISION TIMES (ON AVG)

IMPROVEMENT

41%

IN MEAN TIME TO REPAIR





▶ PROACTIVE DATA ACQUISITION FROM KEY ASSETS

NEW DATA SOURCES TO ENABLE PREDICTIVE MAINTENANCE

SAVES

90%

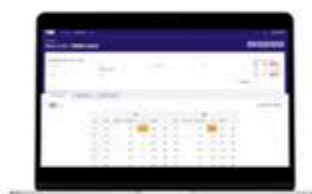
OF THE TIME REQUIRED MANUALLY



Ernst Visser
Technical Manager Assets Rolling Stock



FLEET STATUS
& ALARM MANAGEMENT



MEASUREMENT DETAILS



ADVANCED ANALYTICS
FOR LIFE PREDICTION



VISUAL INSPECTION





+80
FLEETS

27
COUNTRIES

+2K
UNITS MONITORED

+8K
CARS MONITORED

75
WAYSIDE SYSTEMS

NOTE: The fleets highlighted in blue are scheduled for deployment in the medium term over the coming years

FROM CLOUD TO AI: FUTURE STEPS

THE NEW ERA FOR RAILWAY MAINTENANCE

We start from a privileged competitive position enabled by the LeadMind platform, which includes consolidated maintenance solutions known for:

- ✓ REAL-TIME FLEET MONITORING: OVER 2,000 UT AND 80 PROJECTS BY 2027
- ✓ ADVANCED AUTOMATION CAPABILITIES: CLOUD AND AI-DRIVEN
- ✓ SMART PLANNING ADOPTION
- ✓ BUILDING PLATFORM TO ACCELERATE DEVELOPMENT AND TIME TO MARKET
- ✓ ESTABLISHED DATA GOVERNANCE
- ✓ DIGITAL TECHNICIAN

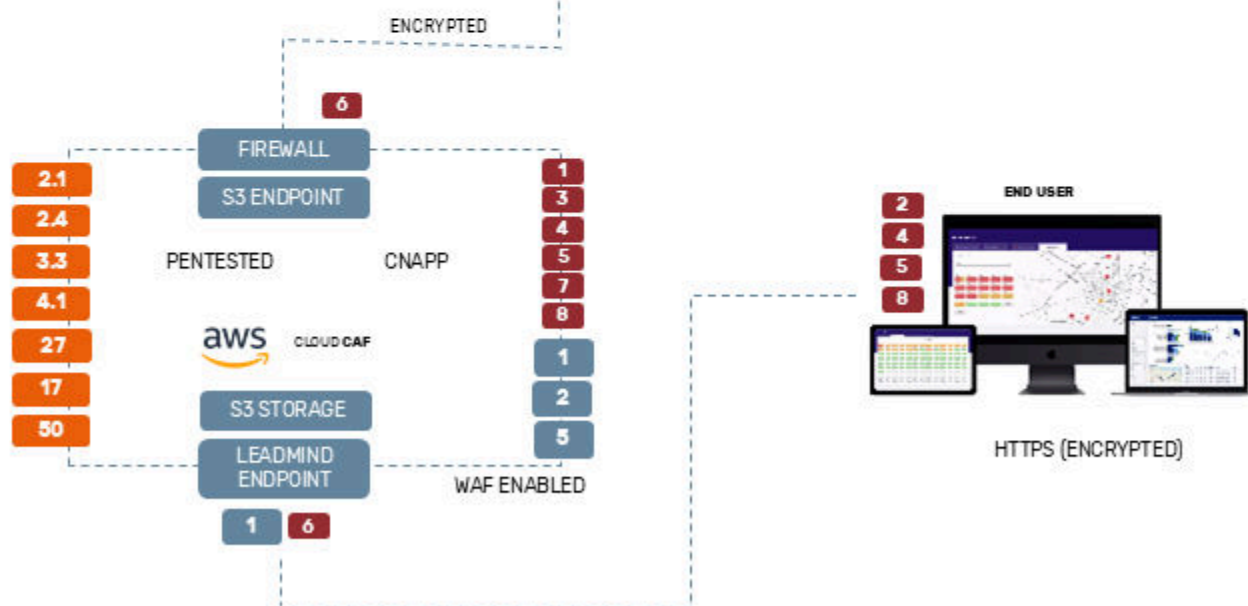


/ GROWING CYBERSECURITY RISKS

COMPREHENSIVE VIEW

TRACTION UNIT

1	4
2	5
3	5
4	4.1
5	4.2
6	50
7	50



CNAPP: Cloud Native Application Protection Platform

/ CYBER GUIDELINES

- 2.1 IEC 62443 - 2-1
- 2.4 IEC 62443 2-3
- 3.3 IEC 62443 3-3
- 4.1 IEC 62443 4-1
- 4.2 IEC 62443 4-2
- 27 ISO 27001 + 27002
- 17 ISO 27017
- 50 TS 50701

/ CYBER RISKS

- 1 Ransomware
- 2 Social Engineering / Phishing
- 3 Unpatched and Misconfig
- 4 Credential Stuffing
- 5 Password Cracking Attacks
- 6 Man-in-the-Middle Attacks
- 7 Denial-of-Service Attacks
- 8 Drive-by Download Attacks
- 9 Supply chain attacks: vulnerabilities and hacks in suppliers' software
- Insider threats: espionage, sabotage and data leakage

/ CYBER CERTIFICATIONS

- 1 SSDLC
- 2 Ext. ISO 27001 with controls from (62443-2.1)
- 3 62443-4.1 SLT 2.
- 4 Management of vulnerabilities and incidents (under development)
- 5 62443 3.3. IDS - Security Gateway

CLOSING REMARKS

THE CLOUD AS A KEY
ENABLER

➤ **TO ENSURE A SCALABLE
AND AVAILABLE FLEET**

TECHNOLOGY AT THE SERVICE OF
THE BUSINESS CHALLENGE

➤ **TO DRIVE OPERATIONAL
EXCELLENCE**

DIGITAL TRANSFORMATION

➤ **A HIGHLY CROSS-FUNCTIONAL
PROCESS FOCUS ON BUSINESS
IMPACT**



cafmobility.com



TRUST
IN MOTION