

# TRUST BY DESIGN

Stefan DISTLBERGER

# TRUST IS INVISIBLE. **UNTIL IT'S NOT.**

Every year, 10 billion passengers board trains without hesitation, trusting in the safety of unseen systems. This trust isn't accidental; it's the very foundation of rail transport, engineered into every component and process.





**DIGITAL  
CHANGES  
EVERYTHING!**

**CRA  
NIS2  
Safety  
Standards**



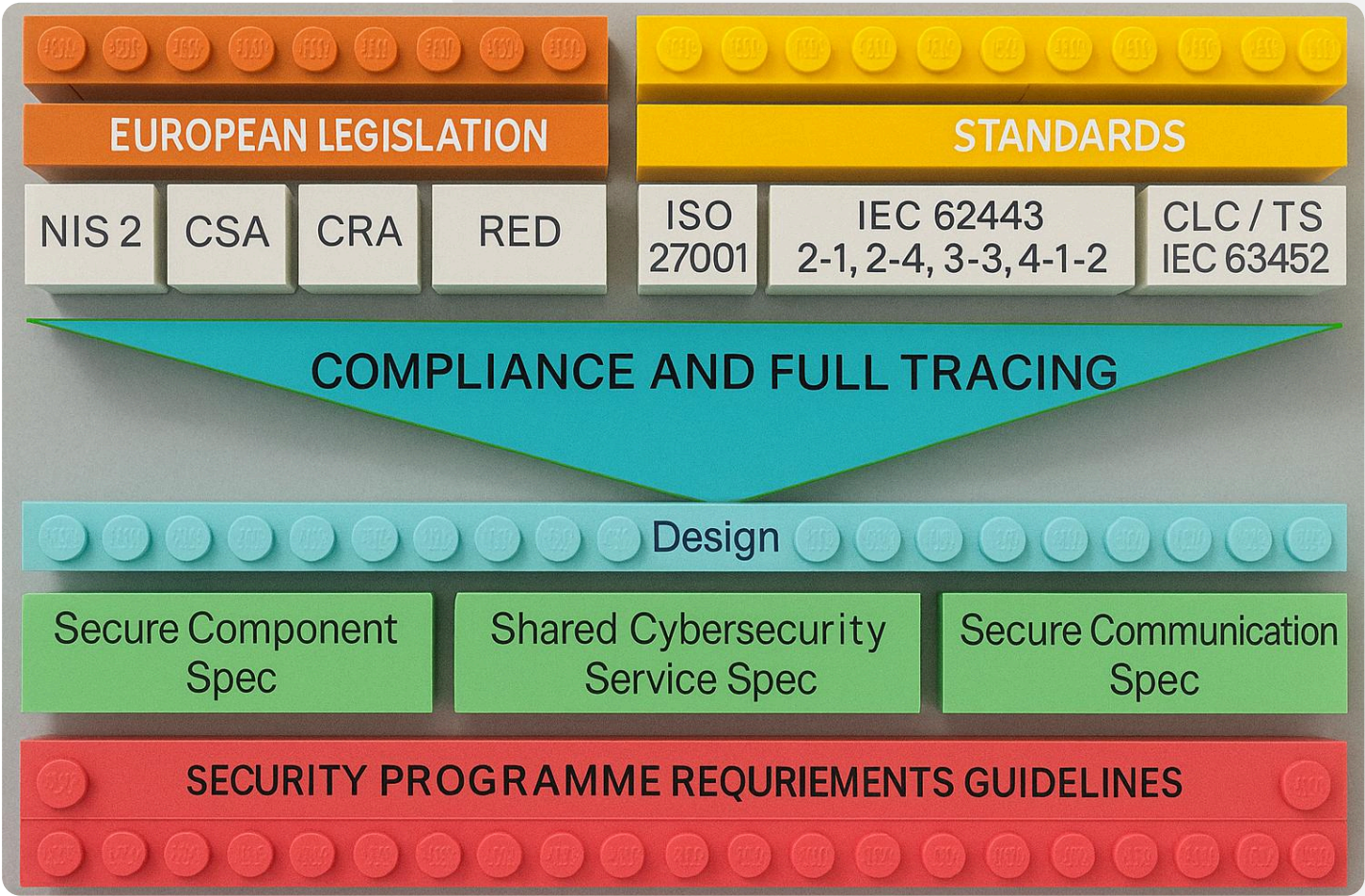
# SAFETY AND SECURITY

TRAIN OPERATION IS A SYSTEM OF SYSTEMS

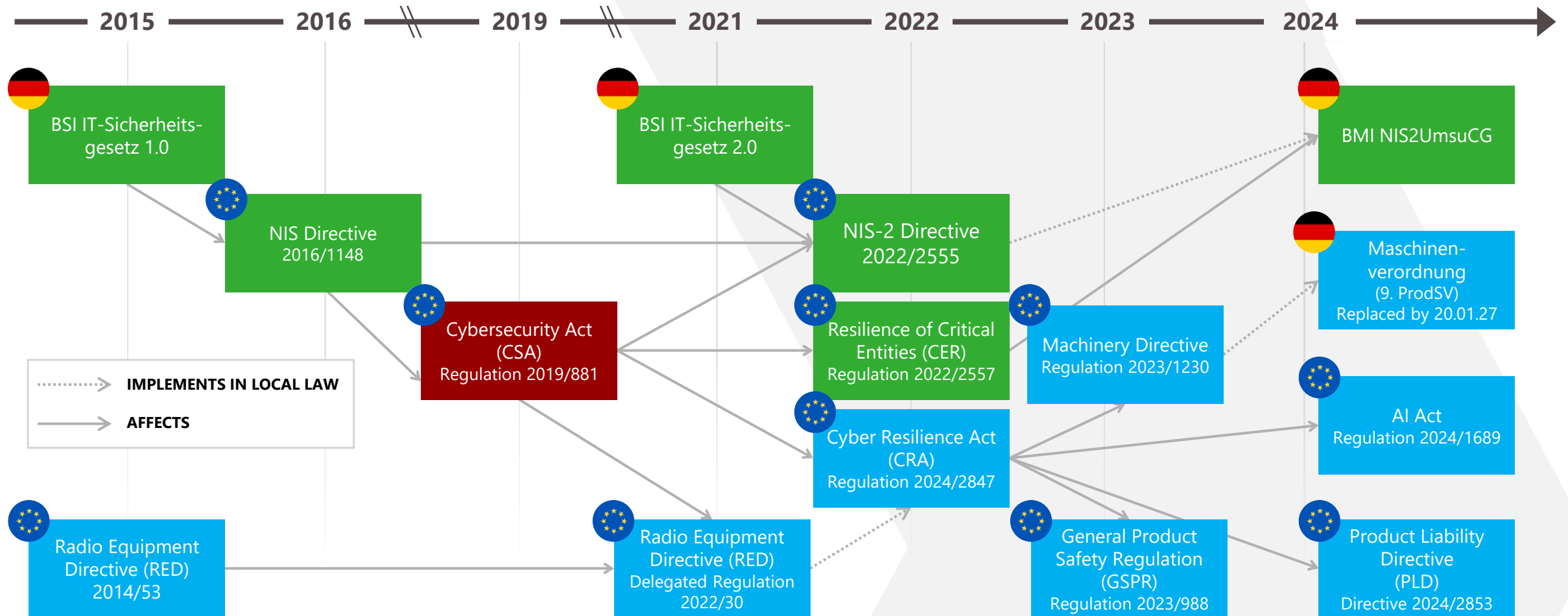




# EUROPEAN LEGISLATION AND STANDARDS



# TIMELINE FOR NIS-2 AND CRA IMPLEMENTATION



# HACK THE NETWORK. HACK THE TRAIN.



**Cyber Attack**



**Safety Attack**

**In an integrated system, cybersecurity breaches directly translate to safety failures.  
The convergence of systems means attackers can compromise train operations  
through cyber means, making cybersecurity everyone's responsibility.**

# **CRA + NIS2 = THE EUROPEAN SHIELD**

European regulations form a comprehensive legal framework,  
transforming cybersecurity from best practice into mandatory requirement.  
It's a unified zone of digital protection for critical infrastructure.



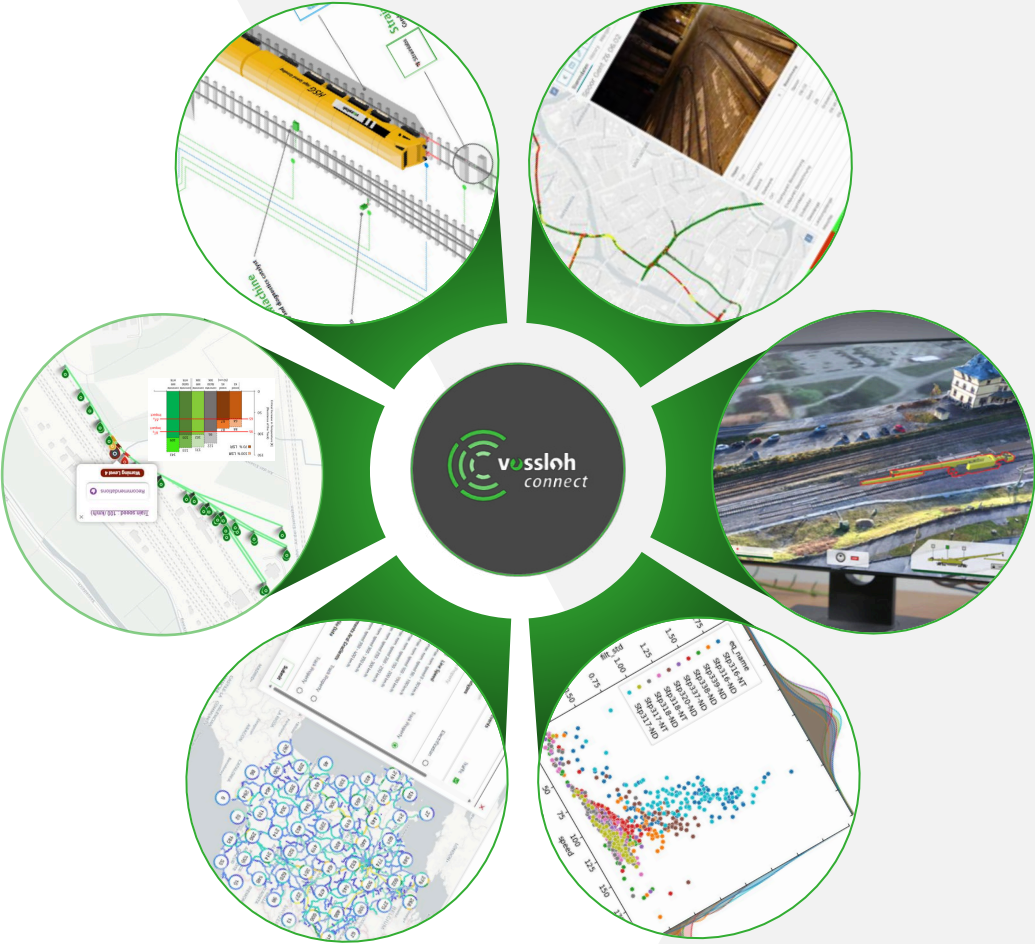
**CRA**  
Product Security

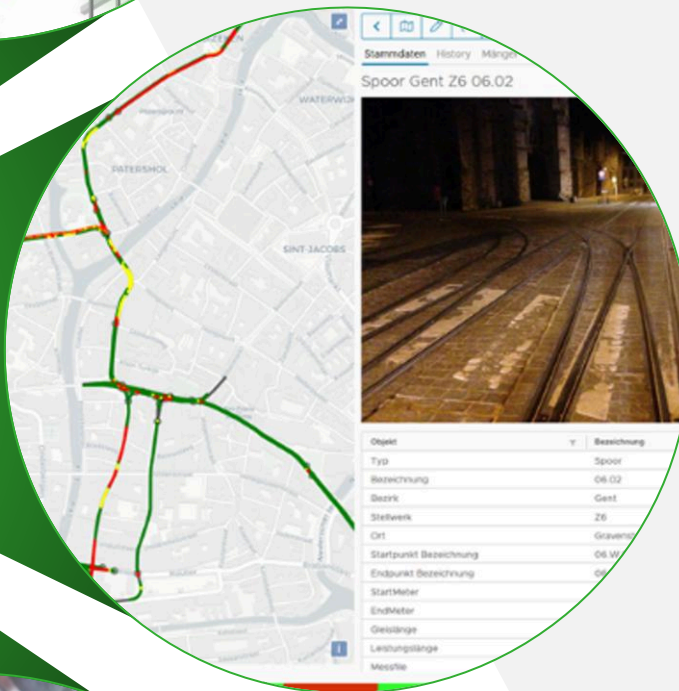
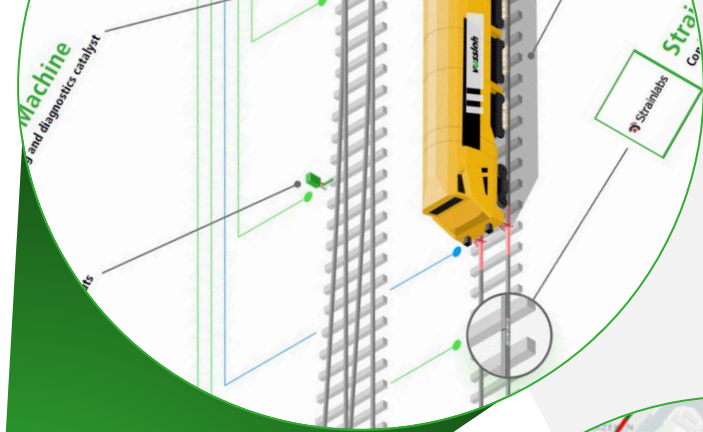
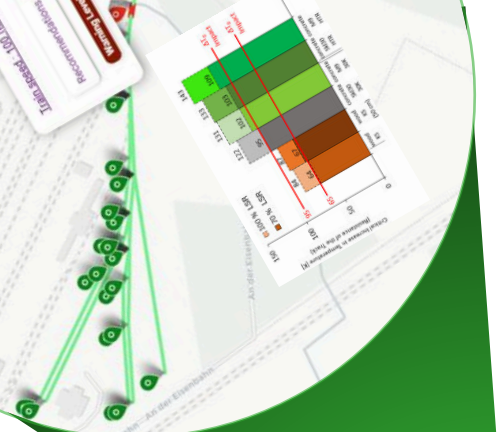


**NIS2**  
Operational Security



# WHY THIS MATTERS FOR VOSSLÖH?

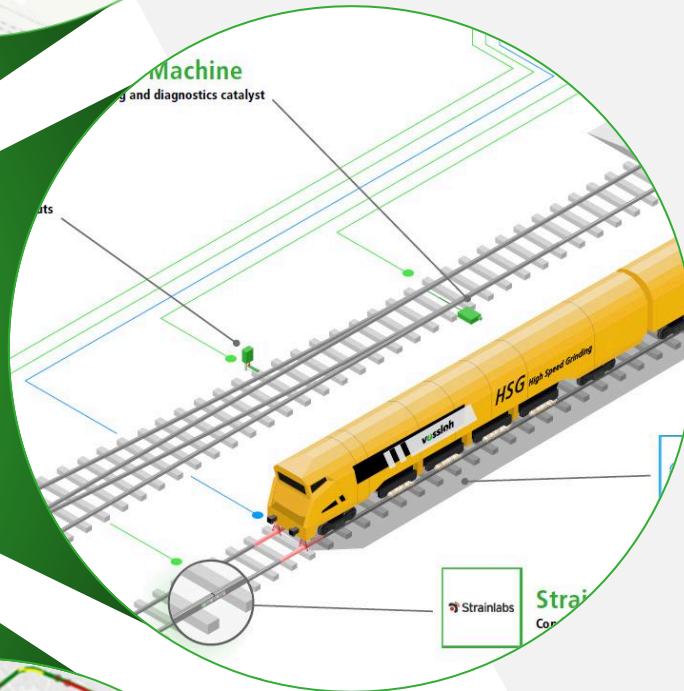




## ASSET MANAGEMENT

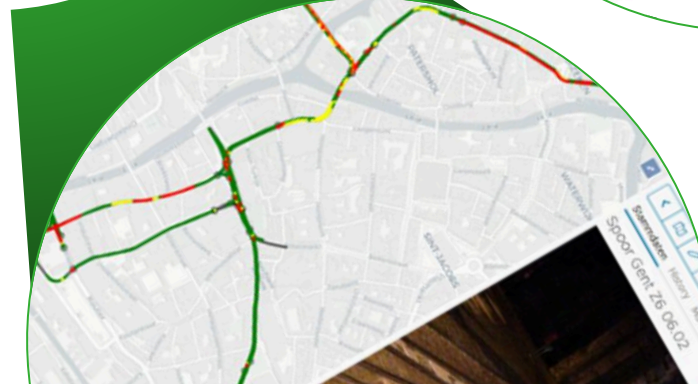
- / BIM – Level 3
- / CMMS
- / GIS
- / Etc.





## WAYSIDE & ONBOARD IoT

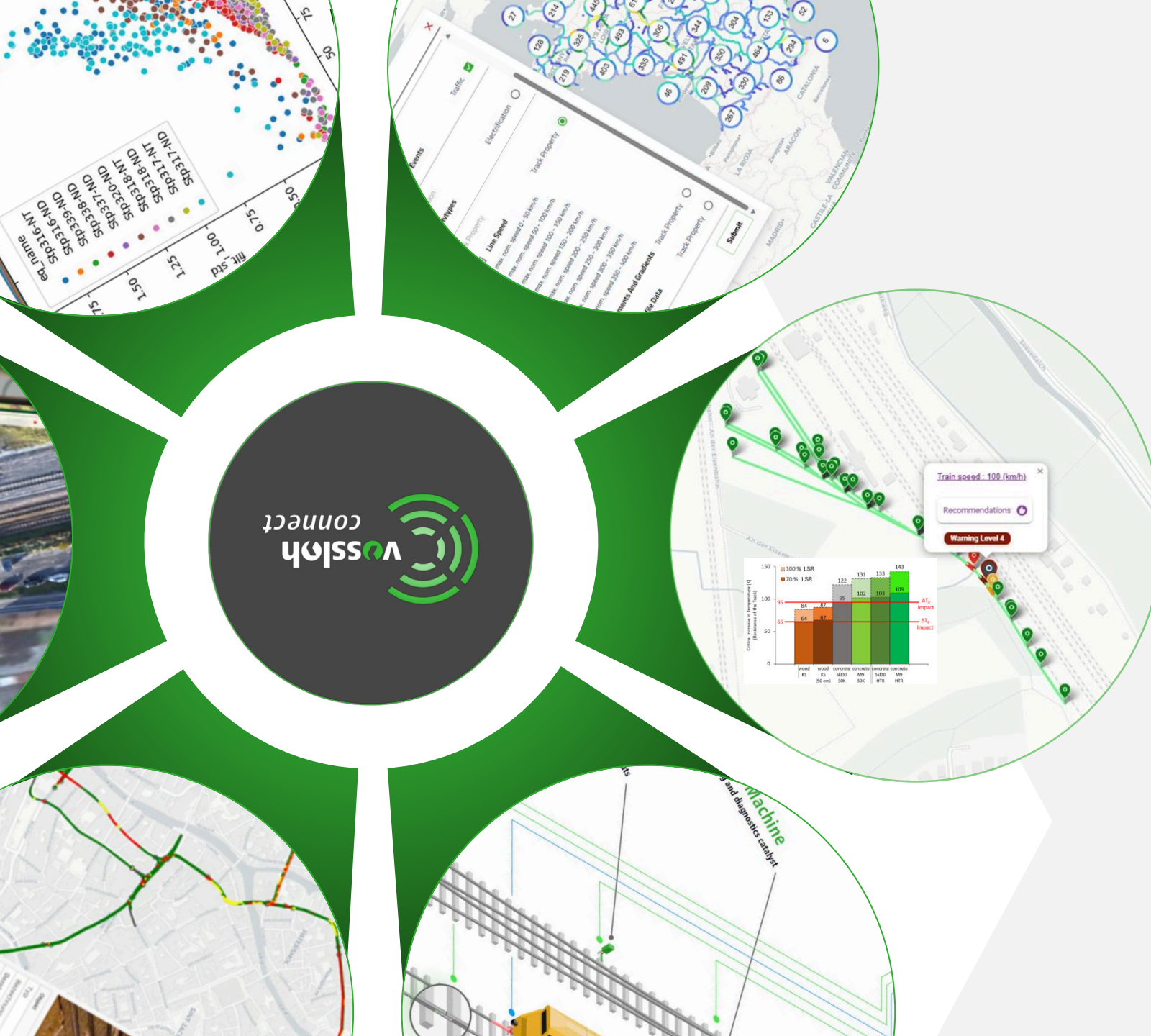
- / Control
- / Inspect
- / Monitor





## TRACKSTABILITY

- / Predict thermal track stability risk
- / Quantify lateral/longitudinal resistance
- / Guide prescriptive maintenance actions



- / Combine any Source
- / Manage critical conditions
- / Visualize any Data source on linear and point assets





## TRUST BY DESIGN. FROM DAY ONE.

It is not a feature to be added or a checklist to be completed. It is the foundational approach that begins every product development, every project, and every daily decision. It is our commitment to ensuring every journey remains safe, secure, and worthy of passenger confidence.

