

DCED Global Seminar 2024

Green jobs and the just transition: applying a
systems lens

1st October 2024

Framing MSD and a Just Transition

What can it mean for donors and practitioners?



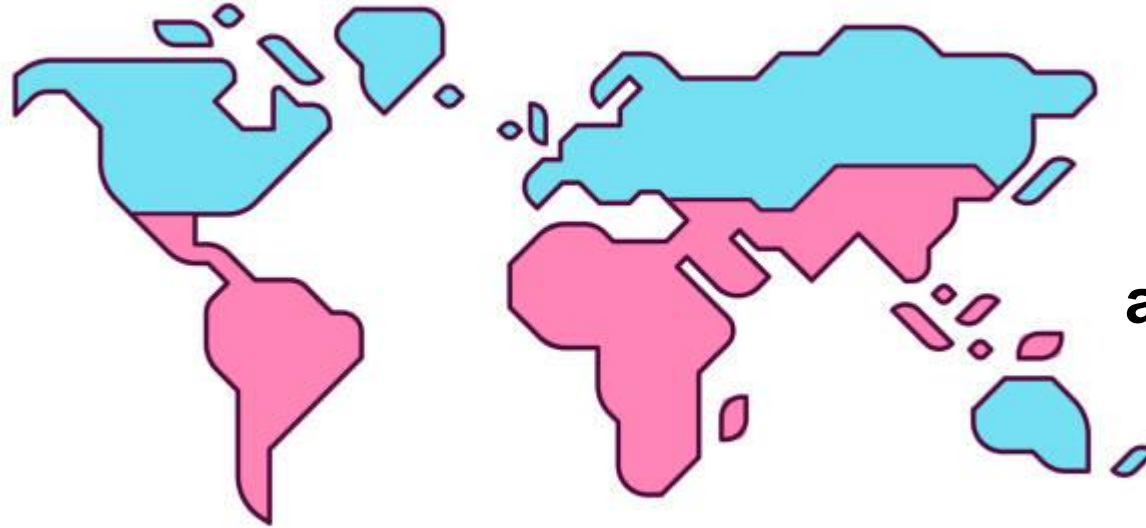
An overview

- Defining a just transition and how we can think about it
- The current perspective on MSD and a just transition
- Where might we focus our efforts in the future?

► 1. Defining a just transition and how we can think about it

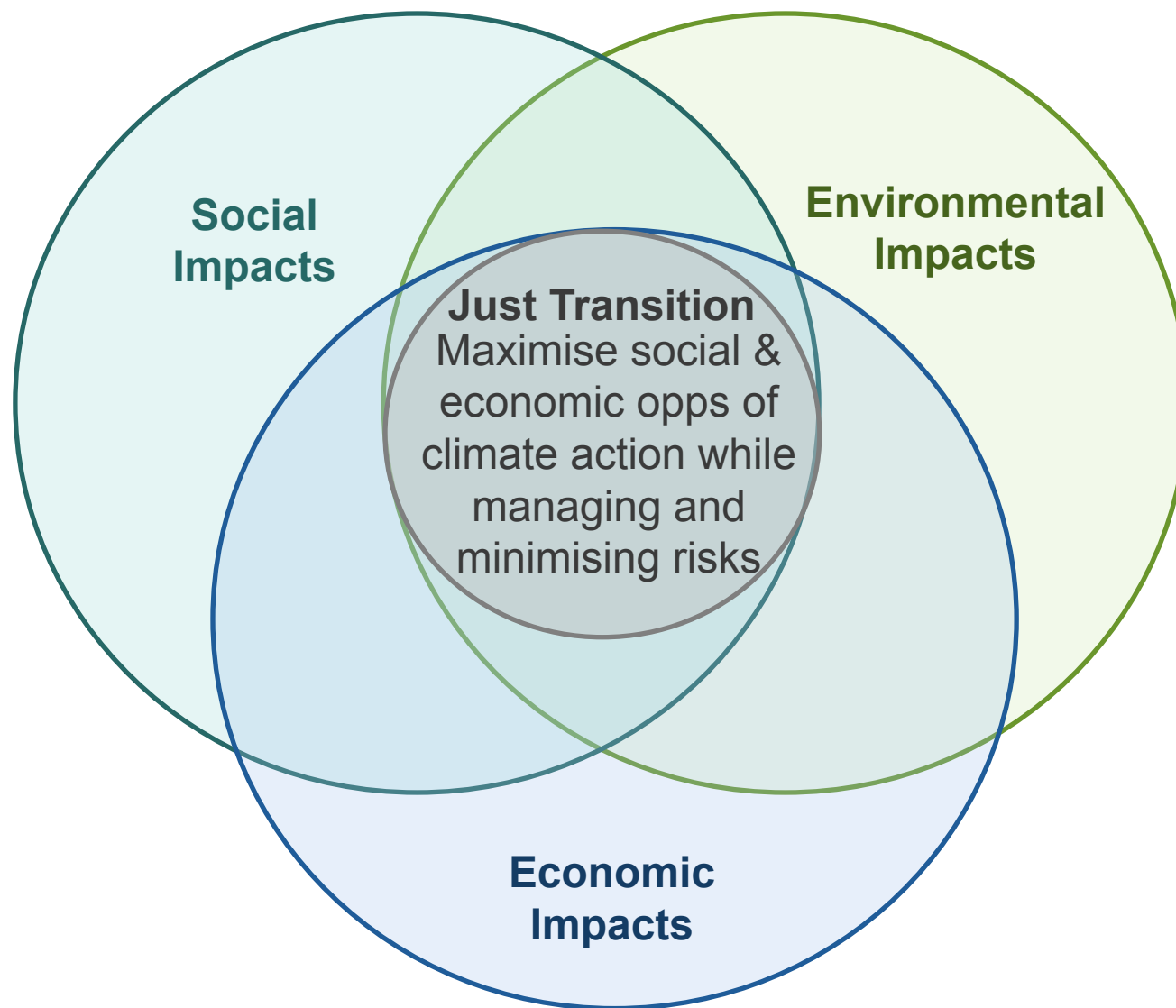
> Why do we need to move toward a just transition?

Poverty
Need to increase
income and
wages

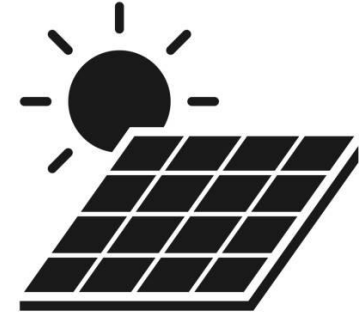


**Growth in current
production models
accelerate climate change**
Need to mitigate

**Climate change
impacts acute for
vulnerable**
Need for adaptation



> Three channels that MSD projects can contribute



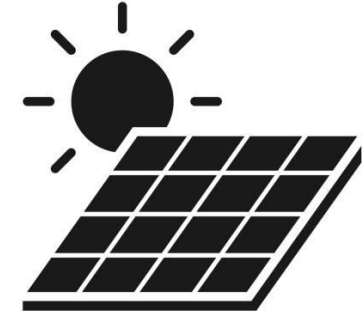
Adapt

Mitigate

Thrive

► 2. The current view on MSD and a just transition

> Current landscape of MSD and JT projects?



Adapt

Mitigate

Thrive

Climate
adaptation Ag
projects

Resource efficiency
& pollution
reduction

Renewable energy
& recycling projects

No MSD projects creating jobs for those affected by transition to sustainable economies



What did the donors say?



Growing JT commitment and understanding but still no intentioned MSD and JT projects

Why not?

- Donor JT Climate Policy hasn't translated to MSD practice
- Government JT Policy broad and unclear how MSD projects can build toward that
- No guidance
- Lack of collaboration between social, environmental and economic teams

▶ 3. Where might we focus our efforts in the future?




Looking to the next wave of projects



Setting Funding
Priorities
(Donors)

Programme Design
(Donors +
Practitioners)

Programme
Appraisal
(Donors)



> Setting Funding Priorities

Main message: Align to existing policy where possible

Scenario 1:
Explicit JT policy

Action: Support
where an MSD
project can add the
most value

Scenario 2:
Adjacent (climate)
policy

Action: Align and
bring in JT thinking
into project

Scenario 3:
No JT policy

Action: Coordinate
with donors and
govt. to support JT
sub-sector plan




Programme Design



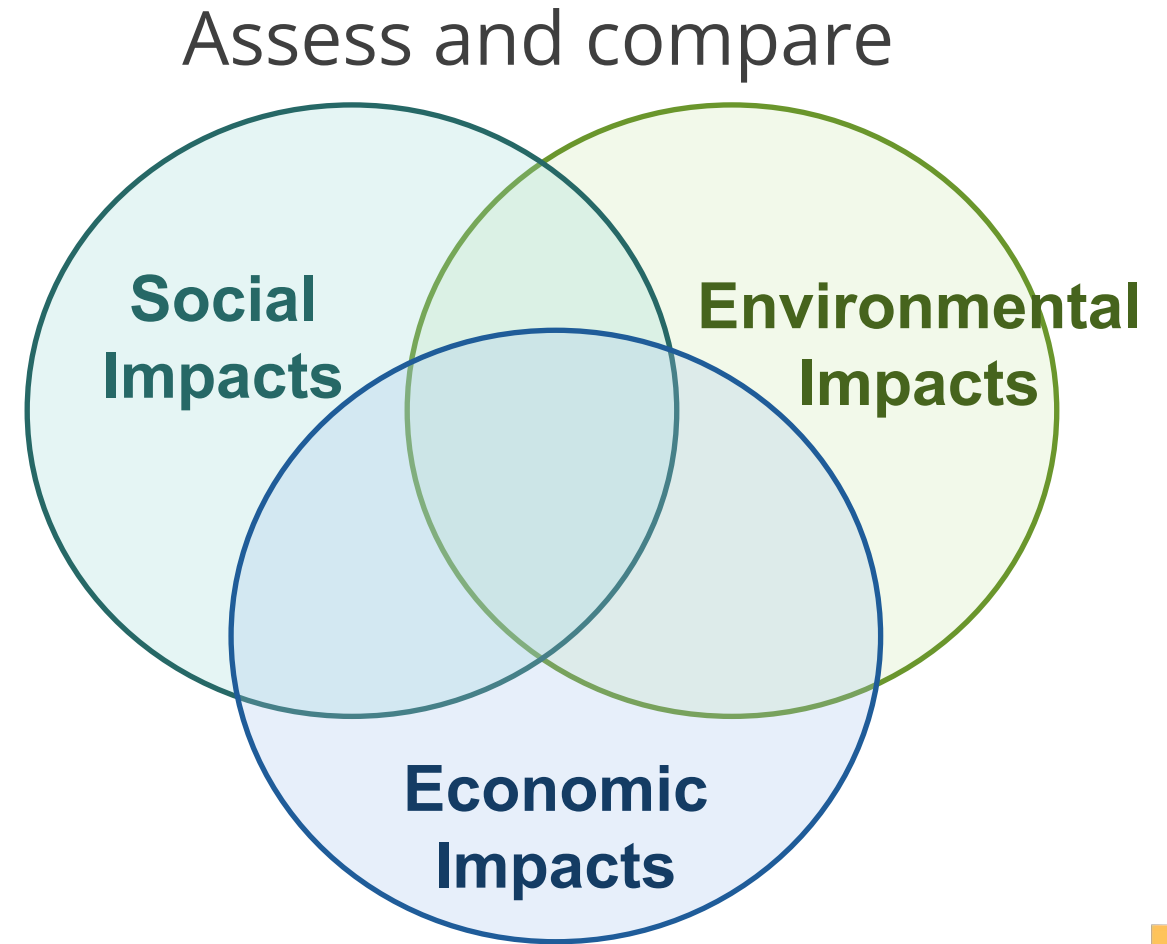
Target group:

- Vulnerable to job/income losses from economic restructuring;
- Vulnerable to impacts of climate change;
- Not likely to access opportunities in the green economy.

Sector Selection: 'new' or 'emerging' green sectors or 'alternative' sectors that do not employ the target group.



> Programme Appraisal





For the next 45 minutes – listen, engage, learn

Objective: Dig into the practical realities of project interventions

- **10 mins – informal walkthrough by case leader**
- **5 mins – ask clarifying questions**
- **25 mins – brainstorm ideas and solutions** to implementation challenges
- **5 mins – case leader reflects** and highlights the most useful insights

► Annex: Recommendations for donors and projects