

# Liberian Agricultural Company



*Responsible tropical agriculture*



February 2026

# TABLE OF CONTENTS

---

01

HISTORY

02

KEY FIGURES

03

INVESTMENTS

04

RESEARCH, TRAINING & LOCAL RUBBER

05

CORPORATE SOCIAL RESPONSIBILITY & DEVELOPMENT





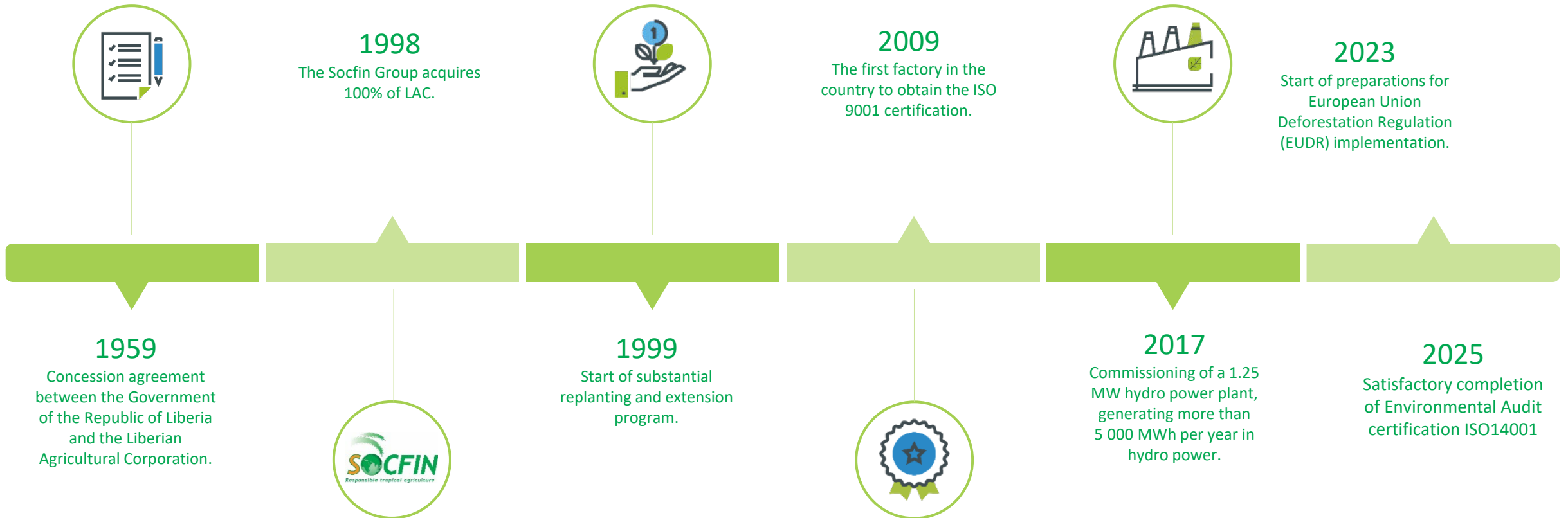
01

---

HISTORY

# OUR HISTORY

Since the Socfin Group took over the Liberian Agricultural Company (LAC) in 1998, huge investments have been made to rejuvenate the plantation, modernize the industrial equipment, and refurbish and construct employee housing.



# HISTORICAL BACKGROUND

- ✓ 1959: Concession granted by the Government of Liberia.
- ✓ Civil war: LAC was Rebel's HQ.
- ✓ 1998: Acquired by Socfin Group. The situation was:
  - Most infrastructures had to be rebuilt.
  - No planting in the 90's.
  - 60's planting covered more than 50% of the planted area - older than economic life of 32 years.
  - Very low production potential (bad regenerated bark).
- ✓ 1998 to 2024: Investment of USD 116 million (USD 42 million for extension and replanting).
- ✓ 2009: ISO 9001 certification obtained for the rubber factory.





02

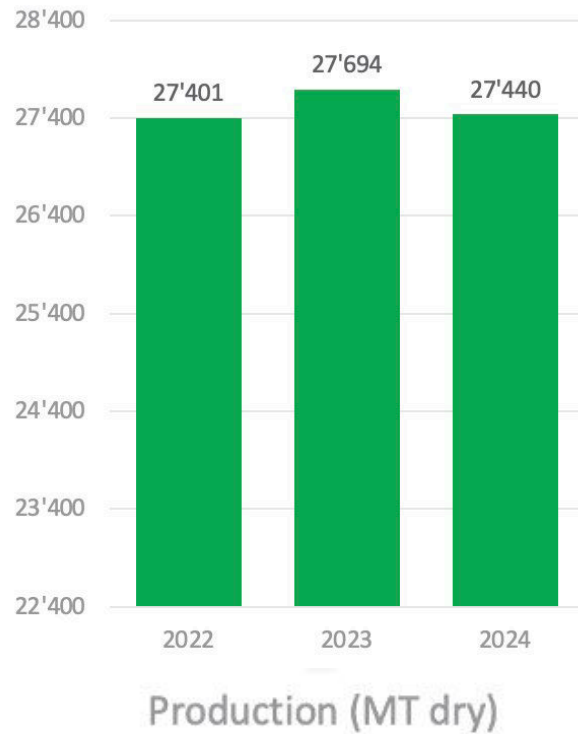
KEY FIGURES

# KEY FIGURES (2024)

**23 000 hectares**

(developed - plantation and infrastructure).

Direct and indirect employment of more than 4 500 people.



**12 270 HA OF RUBBER TREES**



**2 015 DIRECT EMPLOYEES**



**GRAND BASSA COUNTY, LIBERIA**



**USD 44.7 MILLION TURNOVER**



03



SCALE OF  
INVESTMENT

# INVESTMENTS

---

## Investments Socfin

- Since Socfin acquired LAC in 1998, it has invested USD 116 million in the Company.



Extension & Replanting  
USD 42 million



Hydro power plant  
USD 15 million



Bio-mass project  
USD 2 million



Housing, equipment, vehicles  
USD 57 million

04

---

RESEARCH,  
TRAINING &  
LOCAL RUBBER  
PURCHASE

- ✓ Research: Trials for a new planting material with CIRAD, root trainers in nursery to improve planting success, save soil & ease field transportation, young budding technique.
  
- ✓ Tapping technique improvements:
  - Low frequency tapping trial.
  - Rain protection trial.
  - Regenerated bark tapping.
  - Mastering of very high panel tapping.



# LOCAL RUBBER PURCHASE (LRP)

- ✓ LRP ensures good practices for small growers of rubber.
- ✓ Raw rubber purchase price is updated every month, in line with the national price.
- ✓ Catering to the technical needs of small growers by way of Small growers Technical Assistance (STA) team.
- ✓ STA assists smallholders for farm layout, new nursery layout, new trees panel layout, issue of farm materials at cost price, free supply of quality bud wood to nursery owners, stumps supply, etc.
- ✓ Over 1 million subsidized stumps supplied since 2008 to support the local smallholders.
- ✓ Technical training to 194 smallholder tappers in 1 year.





05

CORPORATE  
SOCIAL  
RESPONISBILITY  
&  
DEVELOPMENT

# CORPORATE SOCIAL RESPONSIBILITY

- ✓ Social: schooling and health services – free for employees and dependents



## HIGHLIGHTS (2024)

### Health:



- 1 hospital, 1 clinic & 4 health outposts
- 38 851 consultations
- 3 972 hospitalisations
- 72 Medical staff, incl. 2 Doctors

### Education:



- 11 Schools in multiple locations
- 89 Teaching/admin staff
- 7 899 students
- 65 students on scholarship currently- \$78 000/yr

### Local Development:



- 5 tapping schools
- 102 certifications for smallholders' tappers in 2024

# HEALTH

- ✓ Free access for employees and dependents.
- ✓ Medical services- OP, IP (80 beds) and referral to principal cities for specialized treatments.
- ✓ Outreach programs for dental, eye, etc. routinely done for own population and communities.
- ✓ Recent investments:
  - Extension of the family planning & HIV unit,
  - Pathology analyzer, X-ray machine,
  - Construction of a new Out-Patient Department (OPD), and Ebola/Covid Isolation Unit, a new Triage, an emergency room...



# EDUCATION

---

- ✓ Free access for employees' dependents.
- ✓ Good results in national exam (WAEC) for school – 100% pass.
- ✓ Registration of girls in the school system is at 45%.
- ✓ Adult education/literacy.
- ✓ 348 students admitted from neighboring communities free of fees.
  
- ✓ Recent investments:
  - 1 new primary school for 470 students at Nain Camp & 2 new schools in Estate 3 and in Estate 4,
  - 1 new library at St. Joseph High School,
  - 6 buses for the students & construction of permanent bus stops,
  - 1 extension of St Francis School & renovation of 4 satellite schools,
  - Upgrading of Blessed Alamano school to junior high school.



# SOCIAL COMMITMENTS



New digital X-Ray machine



Ambulances



Ebola/Covid isolation unit



Fire truck

# CORPORATE SOCIAL RESPONSIBILITY (CONT)

- ✓ 33 hand pumps constructed and maintained in communities.
- ✓ Maintenance of the roads outside the plantation.
- ✓ Football fields, welfare activities.
- ✓ Social and sporting events in and out of the plantation.
- ✓ Women organizations formed in 6 camps.
- ✓ More than 120 000 bags (25 kg) of subsidized rice per annum issued to workers
- ✓ 5 000 toys distributed to children during Christmas every year.
- ✓ Financial assistance given for social events outside LAC.
- ✓ Rainwater harvesting in all new toilets.



*Joseph Gargar hand pump dedication*



*Maintenance of LAC/Buchanan Road*

# HEALTH, SAFETY & ENVIRONMENT

## ✓ Environment:

- Training and communication of environment aspects and impact.
- Waste separation management system initiated.
- Sanitation and cleaning of the environment.
- High Conservation Value (HCV) assessment of the ecological, social, and cultural values of land, forest, or water resource.
- Buffer zones created in new replanted area.
- Bio-mass rubber dryer: Use of rubber wood to generate steam for the dryer.



# HEALTH, SAFETY & ENVIRONMENT

## ✓ COMMITTEES (HSE & GENDER)

- Policies and training
- Communication (signs, meetings and radio)
- Discussions & feedback
- Grievance mechanisms
- Behavior, attitude and culture





## Green Energy

### ✓ Hydro power plant

- Hydroelectricity meeting average of 60% of the total energy demand.
- Installed power: 1.7 MW.
- Investment: USD 13 million, excluding capitalized interest.



# LAC, LIBERIA AND THE ROLE OF THE PRIVATE SECTOR

---

- ✓ **Ambition**: to build a model for private sector as a positive contributor to economic and social development, working with our Liberian hosts, in a country with huge potential.
- ✓ Delivering and aligning with the President's ARREST agenda.
- ✓ Working with other private sector actors (including small holders), the government and academia to catalyze growth.
- ✓ **Key added value**: development employment, education, training, expertise and knowledge-sharing.

An aerial photograph of a vast, dense forest with a dirt road winding through it. The trees are a vibrant green, and the road is a reddish-brown color. The text "Thank you for your attention." is overlaid in white, centered on the image.

Thank you  
for your attention.

[www.socfin.com](http://www.socfin.com)