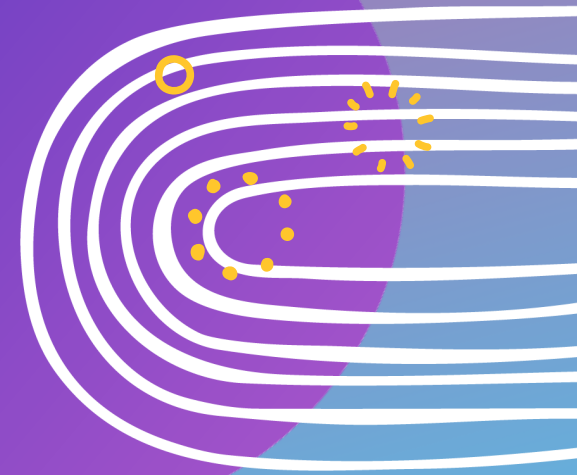


Public Health Data Modernization Preconference Forum: Closing Remarks

March 9, 2026





A New Operating Model for Public Health

Sameer Vohra, MD, JD, MA
Director, Illinois Department of Public Health

March 9, 2026



The State of Health

SCIENTIFIC
AMERICAN

A 'shadow CDC' is scrambling to fill gaps in public health data

THE WALL STREET JOURNAL.

THE FUTURE OF EVERYTHING | HEALTH

Patients Are Diagnosing Themselves With Home Tests, Devices and Chatbots

Chicago Tribune

Illinois joins World Health Organization network, after Trump administration withdraws from group

NBC NEWS

How AI is transforming healthcare across the country

FAST COMPANY

How AI is changing the patient journey

Hospitals Are a Proving Ground for What AI Can Do, and What It Can't

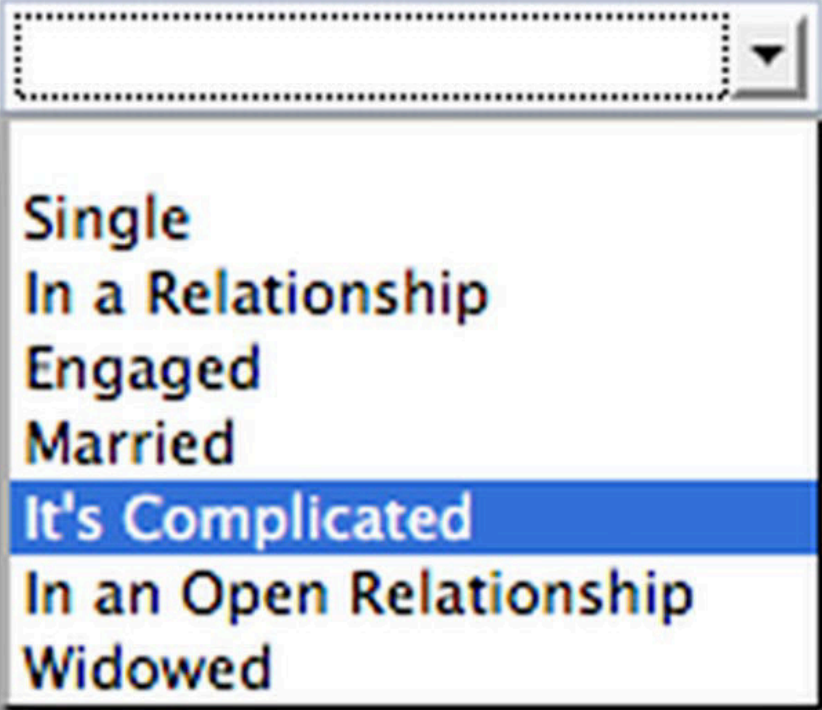
Healthcare is going all-in on artificial intelligence, from reading patient scans to fighting insurance denials

The State of Health

Relationship Status:

Interested in:

Looking for:



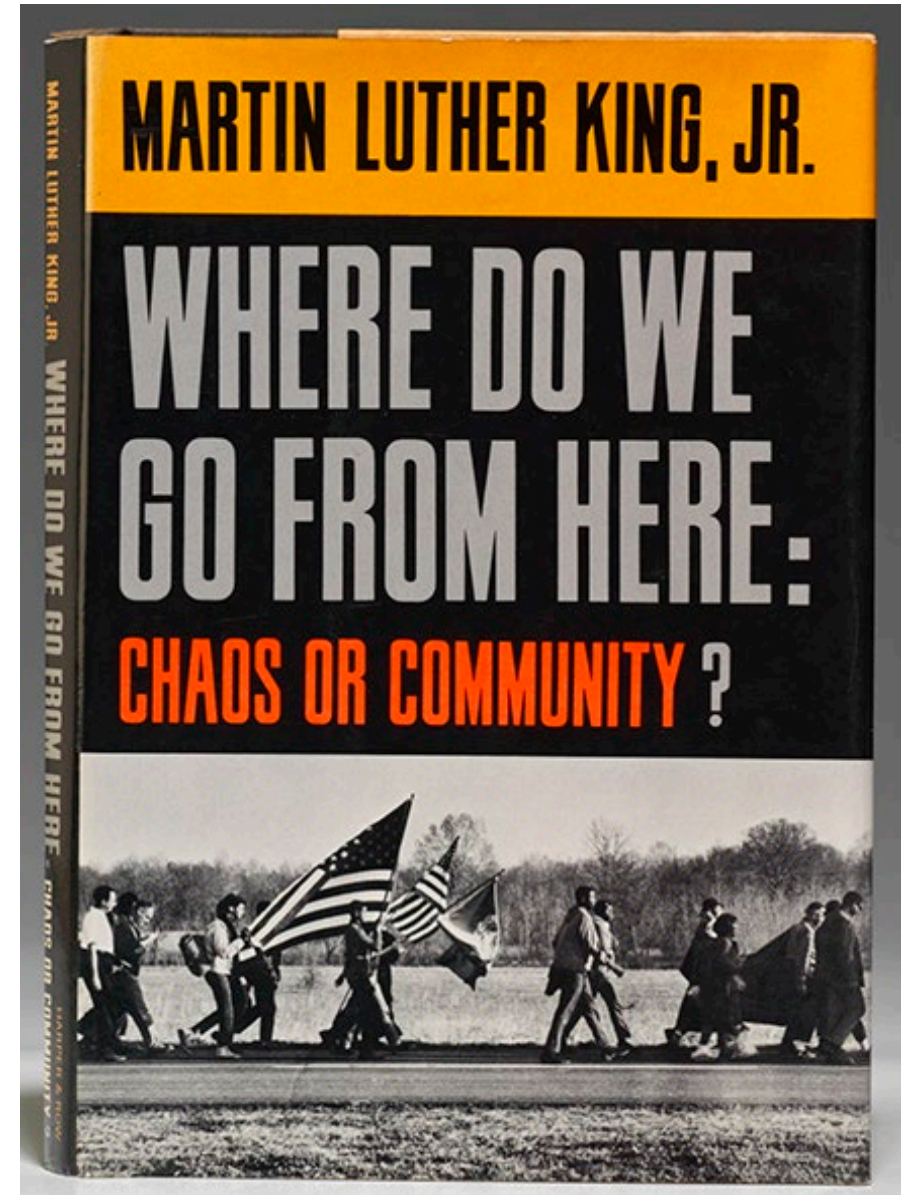
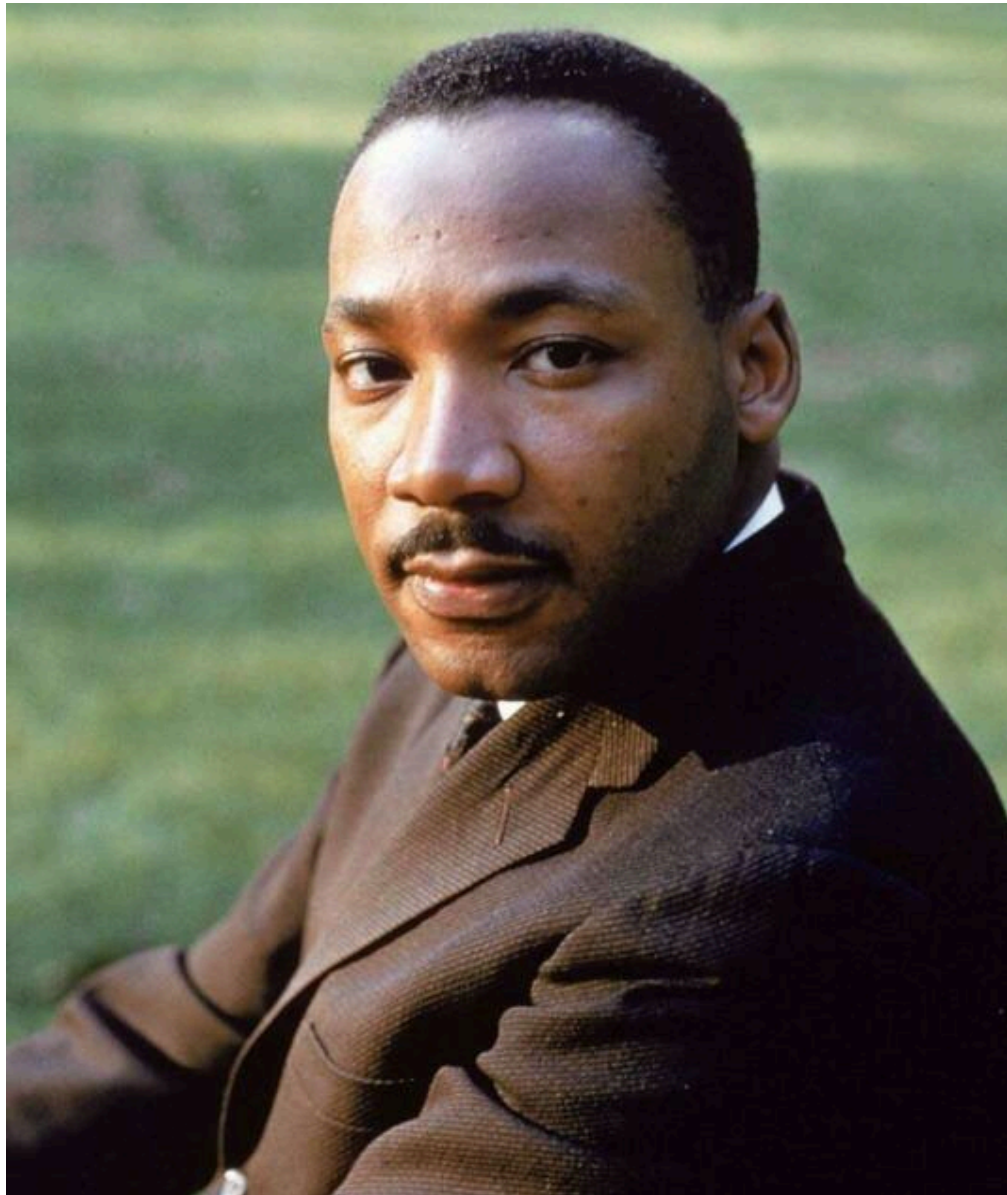
A screenshot of a web form with three labels: 'Relationship Status:', 'Interested in:', and 'Looking for:'. To the right of these labels is a dropdown menu. The dropdown menu is currently open, showing a list of relationship status options. The options are: 'Single', 'In a Relationship', 'Engaged', 'Married', 'It's Complicated', 'In an Open Relationship', and 'Widowed'. The option 'It's Complicated' is highlighted with a blue background. The dropdown menu has a dotted border and a small downward-pointing arrow in the top right corner.

The State of Health



Where Do We Go From Here?

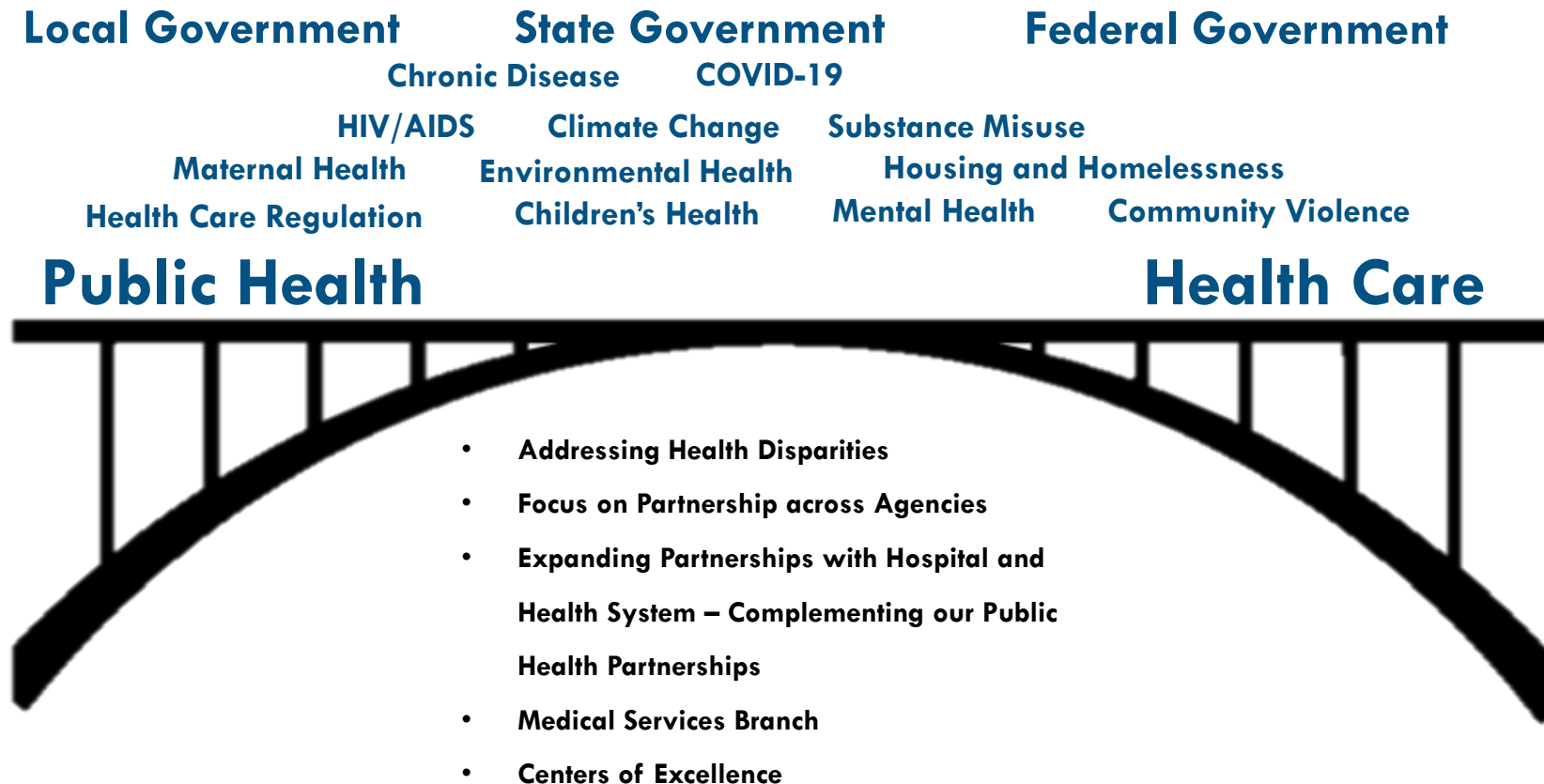




A large group of people is sitting on a grassy hill, looking out over a city at sunset. The scene is bathed in warm, golden light, and the city skyline is visible in the distance. The text "Public Health is About Communities" is overlaid in the center of the image.

Public Health is About Communities

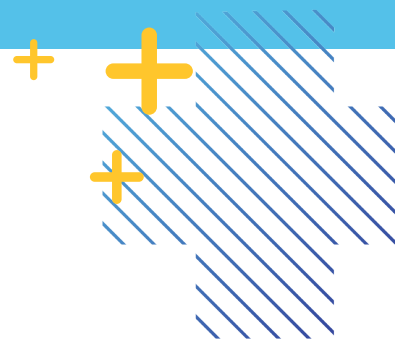
A Unified Vision for Health: From Reactive to Predictive Public Health



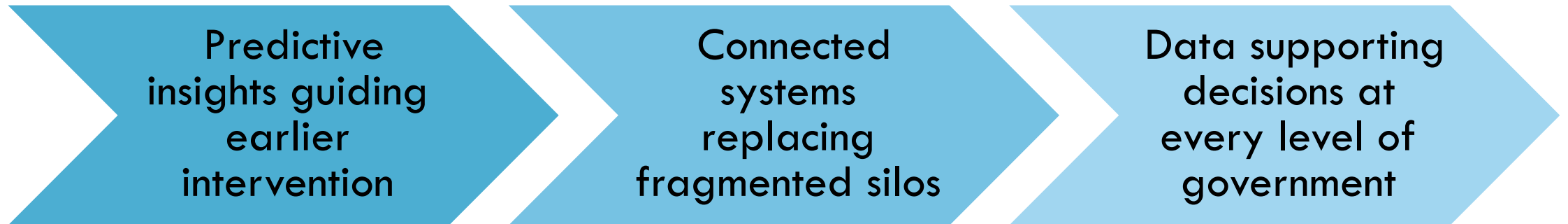
Illinois Department of Public Health: A Journey to Build a Brighter Future



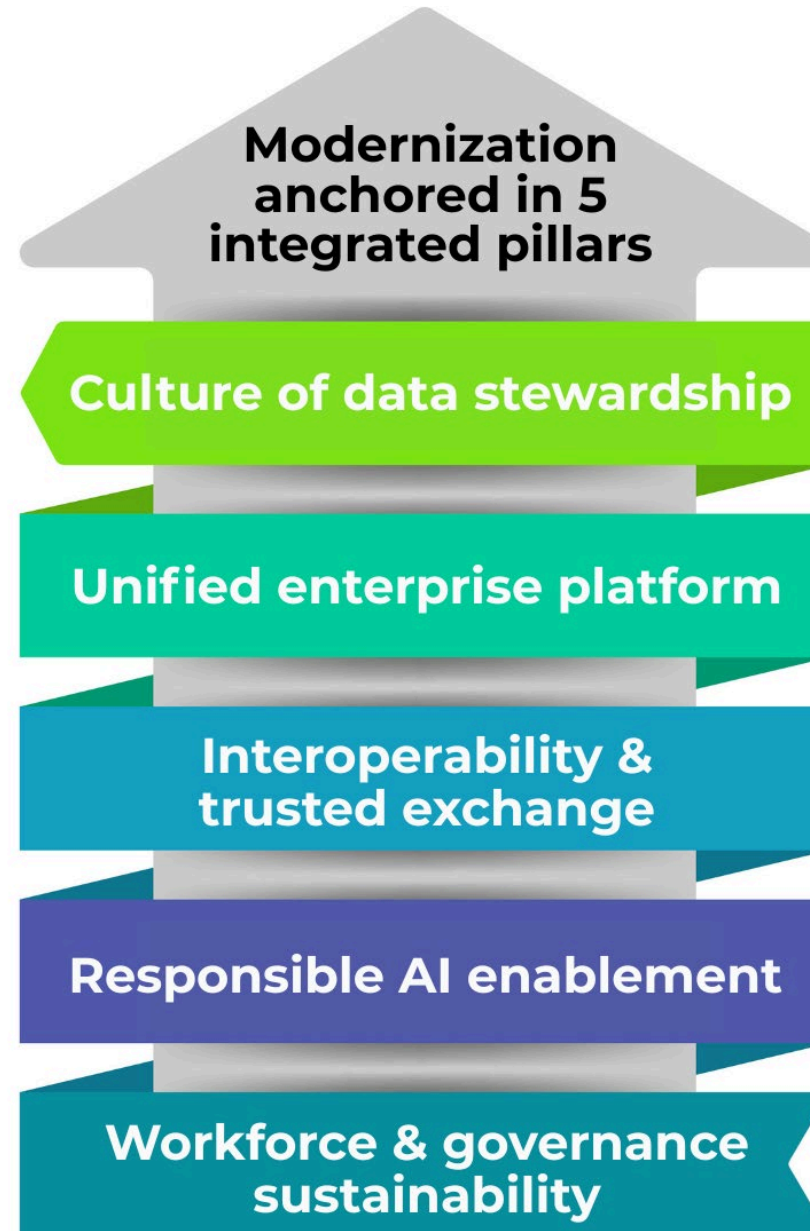
A New Operating Model for Public Health



Illinois is shifting from delayed reporting to real-time intelligence



Our Strategic Priorities



From Reporting to Bi-Directional Exchange

Public health integrated into the healthcare ecosystem

- Standards-based data exchange with stakeholders
- Real-time information flow across agencies
- Decision support embedded into clinical workflows
- Secure collaboration with local health departments

Artificial Intelligence as a Public Health Enabler

- Transitioning from descriptive to predictive public health
 - Continuous surveillance and early risk detection
 - Digitization of legacy records at scale
 - Predictive modeling for emerging threats
 - Governed, ethical, and transparent AI use





Institutionalizing Capability & Trust

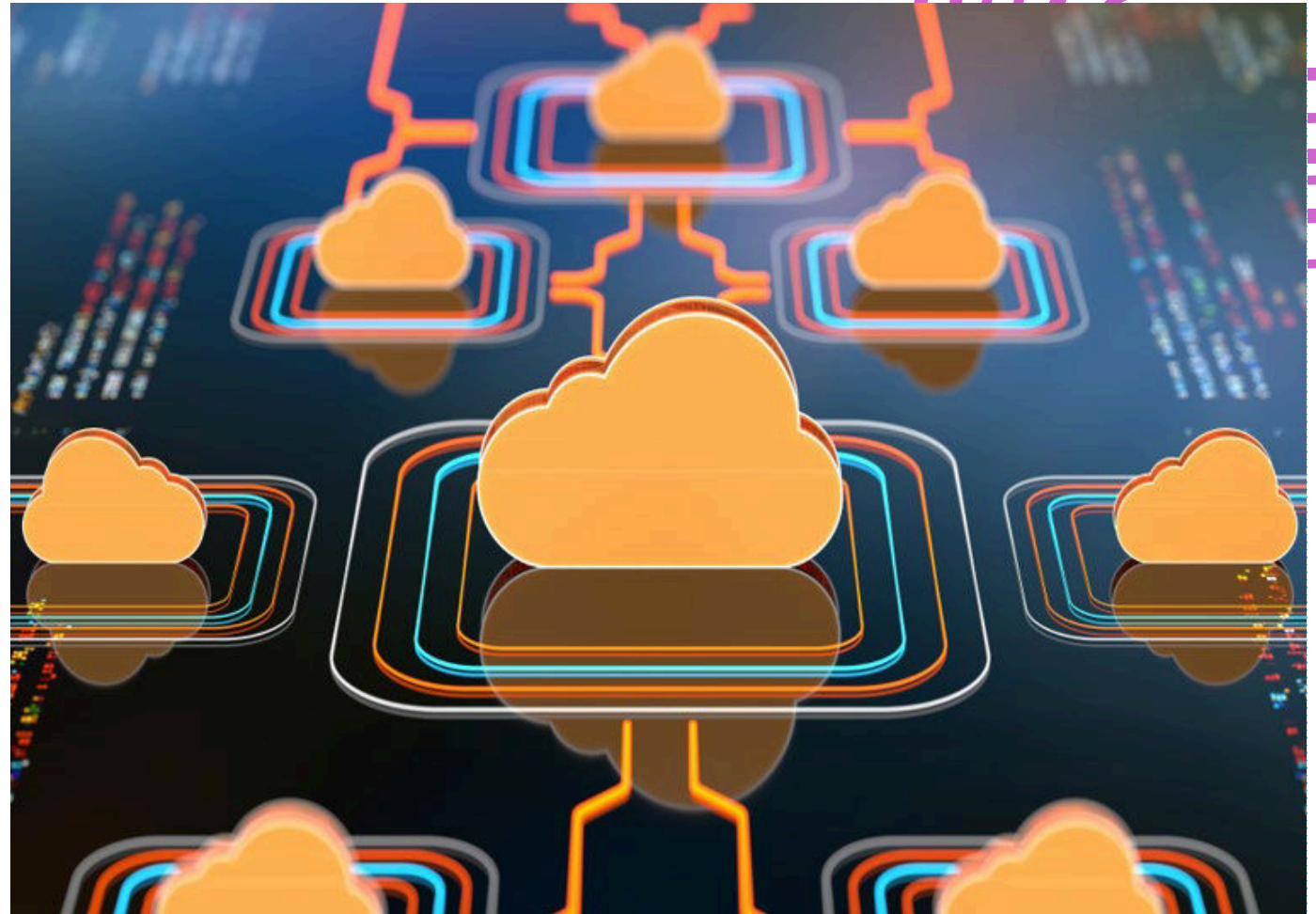
Modernization sustained through people
and policy

- Agency-wide data literacy expansion
- Leadership Training on AI use cases
- Specialized informatics workforce development
- Enterprise governance framework
- Clear accountability and access controls
- Trusted AI policy with built-in ethical safeguards

Building a Unified Enterprise Data Platform

Creating a single, trusted foundation for public health insight

- Integrated cross-program data assets
- Longitudinal, person-centered perspectives
- Shared analytics environment across the agency
- Sustainable cost and performance governance



Leaning Into TEFCA

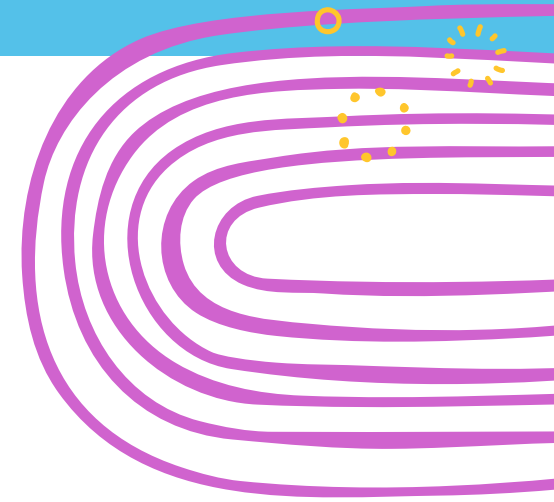
Building a Foundation for TEFCA to become operational, not symbolic to our work.

- Completed legal review to authorize Illinois participation in TEFCA
- Finalizing DURSA agreement with eHealth Exchange
- Deployed a production FHIR Gateway to support TEFCA exchange
- Using our Master Patient Index to ensure accurate patient matching

Some of our projects :

- eCR on FHIR
- Bidirectional data exchange
- Clinical decision support (CDS) hooks

Building Better Partnerships with Healthcare



Successes:

Exploring new use cases for (eCR)

Deployed FHIR-based exchange to support more timely data flow

Advancing TEFCA participation to enable national-level connectivity

Partnered on bidirectional data pilots to move beyond one-way reporting

Partnered on Pull data exchange model to change the traditional push model

Challenges:

Providers are overwhelmed; public health is rarely their top operational priority

Incentives are not aligned , reporting is required, bidirectional exchange is not

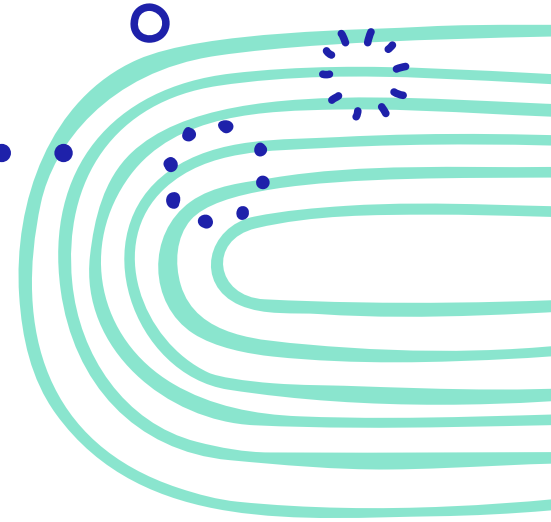
Funding uncertainty impacts long-term sustainability

Legal and compliance alignment takes time

Challenges Lie Ahead



More Questions than Answers Remain . . .



What questions are we asking about the future of public health modernizations?

- Can we systematically change the culture of our government organizations?
- What does "resilient public health infrastructure" truly mean in a constrained fiscal environment and without sustained investment?
- How do we accelerate innovation without compromising transparency and governance?
- Can public-private partnerships help bridge agility gaps?
- Should states collaborate on shared platforms rather than building independently?
- How do we prevent automation bias becoming the norm in a burnt-out public health workforce?
- Will governmental public health become obsolete in favor of robotic and artificial options?

HIMSS Conference Preview

**Charge: use this conference
to work with others
to answer these questions**



Powering Innovation Together: Advancing State Health Policy Through Digital Transformation and Cross-Sector Collaboration

Wednesday, March 11 9:45 a.m.



Lonnie Edgar, Jr.

Deputy Director
Mississippi Joint Legislative PEER Committee



Kat McDavitt

President & Founding Partner
Innsena



Bruce D. Greenstein

Secretary of Health
Louisiana Department of Health



Fabian Doñate

State Senator, District 10
Nevada State Legislature



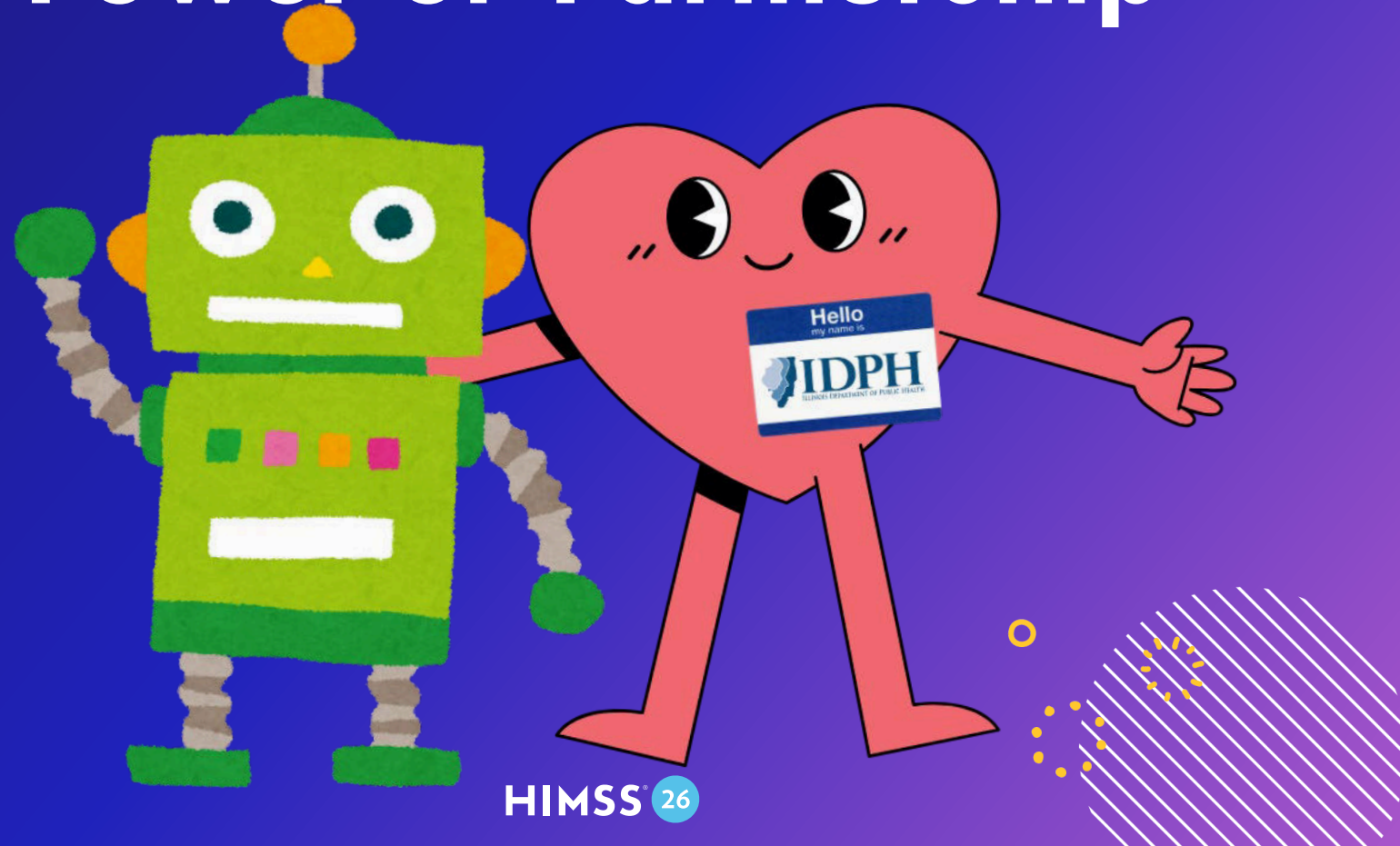
Sameer Vohra

Director
Illinois Department of Public Health

Public Health is Fueled by the Power of Partnership

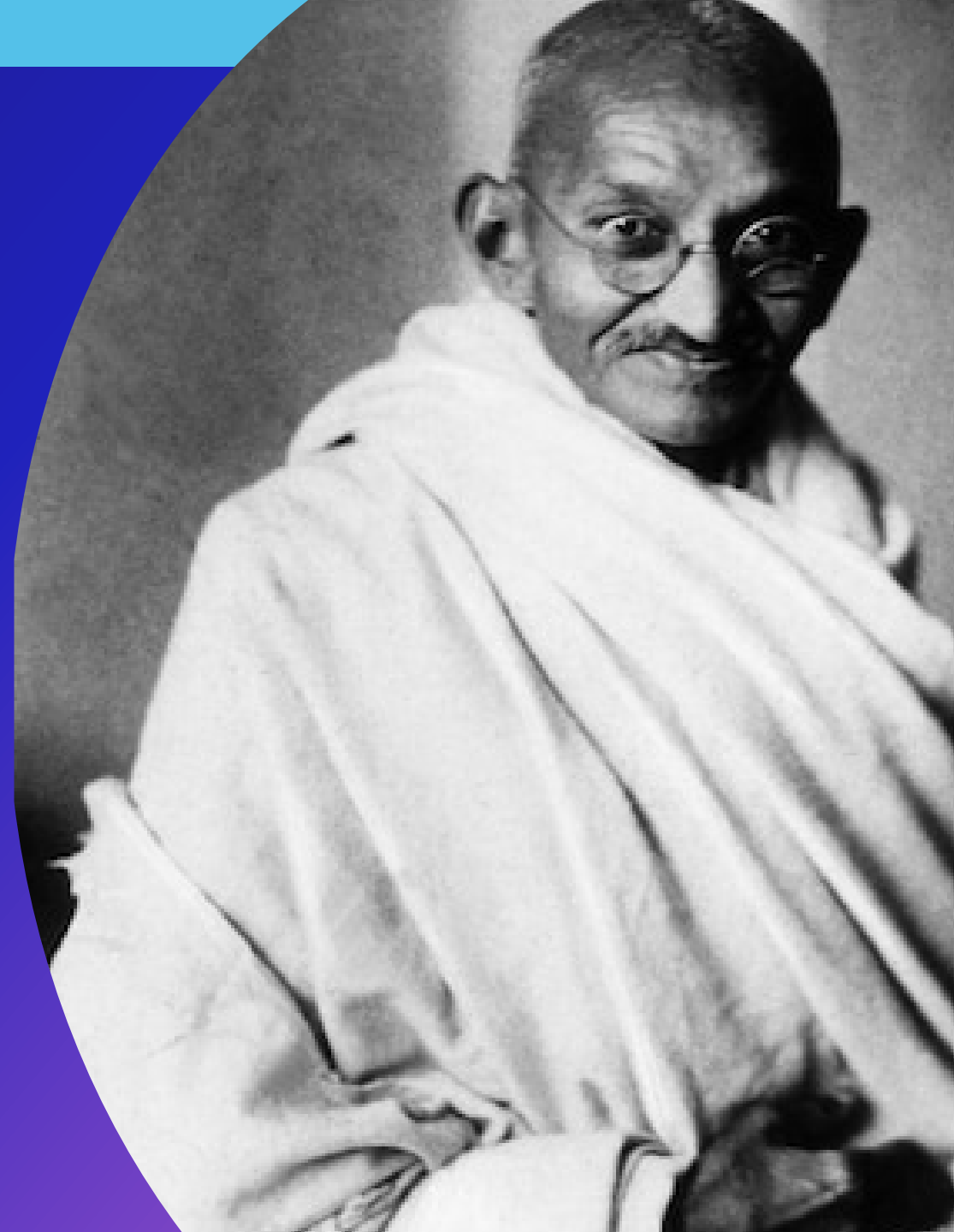


Public Health is Fueled by the Power of Partnership



**"The future depends
on what we do in
the present."**

-Mahatma Gandhi



Where to Find IDPH



Instagram
@illinoisdph



Facebook
@IDPH.Illinois



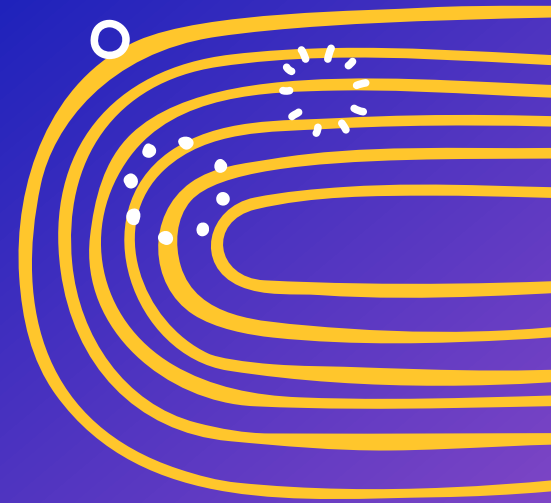
X (Twitter)
@IDPH



LinkedIn
@il-department-
of-public-health



Website
dph.illinois.gov



Public Health Data Modernization Preconference Forum: Closing Remarks

March 9, 2026

Alana Lerer, MPH

Senior Government Relations Manager,
HIMSS



Let's Review!

Morning Sessions

Breaking Silos, Building Success: A New Era of Policy, Funding, and Partnerships

Federal Strategies to Modernize Public Health Data and Information Exchange

10-minute Break

From Data to Detection: Using Surveillance and EHRs to Protect Public Health

Lunch and Table Topics

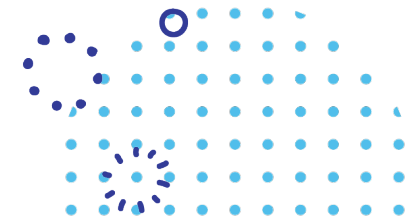
Afternoon Sessions:

Navigating the Modernization Maze: Strategies for Resilient Public Health Systems

From Assessment to Implementation: Michigan's Data Driven Strategy to Advance Digital Public Health Transformation

Information Exchange (Nevada's Version): Where Public Health Meets Healthcare

Closing Remarks and Perspectives from Illinois Department of Public Health



BECOME A HIMSS MEMBER



Connect with the world's leading health tech community.



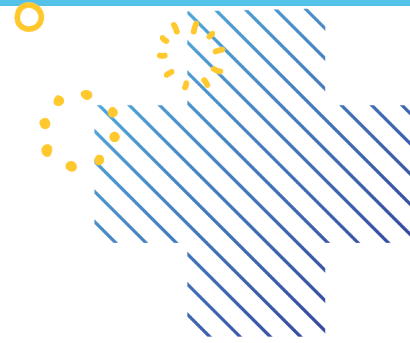
Unlock year-round opportunities for professional growth.



JOIN HERE:



A Few HIMSS26 Highlights



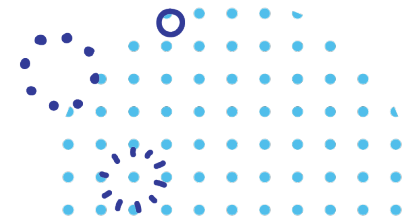
- **Opening Reception: Tonight at 5 - 7pm at Caesars Forum Event Plaza**
- **HIMSS Connect: Level 2 | Hall B | Booth 2016**
 - Engage with HIMSS Staff
 - Learn about membership & Digital Health Indicator
 - Attend sessions
- **Government Connections Plaza: Level 1 | The Park (Hall G) | Booth 12526**
 - Sessions Tues – Thurs & Reception: Tuesday 4:30 – 5:30pm
- **Views from the Top and Keynote Sessions**
- **Session 21: CO, NV, and LA Take Action**
- **Session 28: From Data to Foresight: Modernizing Public Health Intelligence**
- **Session 80: Powering Innovation Together: Advancing State Health Policy**

Charge for the Week

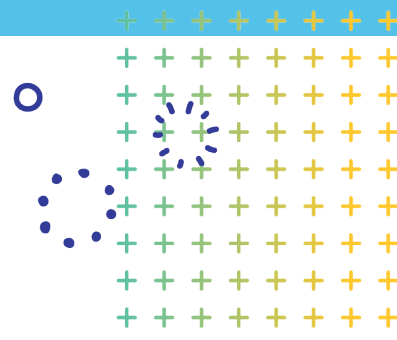
Connect across healthcare and public health. Ask key questions.

Broaden your exposures – peruse the exhibit hall, attend new types of sessions, learn from across the globe.

Take a break at the infamous Puppy Park (Level 2 | Hall B | Booth 3064) and new Kitten Playground (Level 1 | The Park (Hall G) | Booth 11611)



Many Thanks to HIMSS's Forum Sponsors!



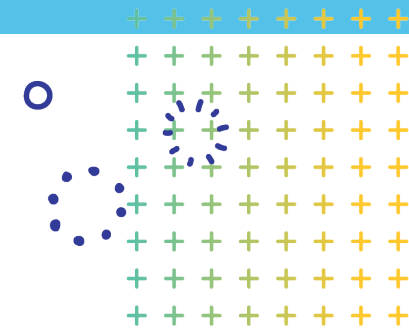
Elite
Sponsor



Premier
Sponsors



Many Thanks to HIMSS's Planning Partners!



Founding
Partner





*Please provide
feedback – scan here*

*Stay engaged:
Policy@himss.org*



**Thank You &
Enjoy
HIMSS26!**