



LIBERIA – EU BUSINESS FORUM

**National Fisheries and
Aquaculture Authority (NaFAA)**



Agenda

- Sector overview
- Efforts against IUU
- Status of EU Yellow Card
- National Aquaculture Fishing Off Taker Farms
- Fisheries Port
- Q&A

Snapshot of Liberia's Fisheries Sector

Sector Overview

- The 2017 Act establishing the Authority
- EEZ of 200 NM
- IEZ of 6 NM reserved for Artisanal and Semi-industrial fisheries
- 2019 Fisheries Law
- 2020 Fisheries Regulations
- Ratified the PSMA

Stock Status

Biomass estimate

- Pelagic (Sardinalla spp, Mackerel etc.)- 94,000 tons.
- Demersal (Croakers, Dentex, Grouper etc.)- 254,502.95 tons.

Production

- Industrial demersal (six trawlers)- 6000 tons
- Tuna production- 17,000 tons
- Artisanal production- 28,000 tons

State of Aquaculture

- Aquaculture production is estimated at 2000 MT
- About 1500 farmers covering 115 hectares
- Main culture species: Tilapia, Catfish and Heterotis

Challenges

- Access to quality seeds and feeds
- The sector is still at a subsistence level

Liberia's Fight Against IUU




Progress on EU Yellow Card and Governance Reforms

- 24/7 Monitoring of all vessels
- Full compliance of long distant fleets engage in transshipment program
- issuance of transshipment authorization upon application and due-diligence
- Fined three companies that imported without permits.
- Developed two Fisheries Management Plans
- Conducted three stock assessments-management of the stock within MSY.
- Strong interagency coordination
- Full implementation of the 2019 Fisheries Law and 2020 Regulations.
- TA on IUU from the EU



Liberia's Fisheries Monitoring Center

Progress on EU Yellow Card continues

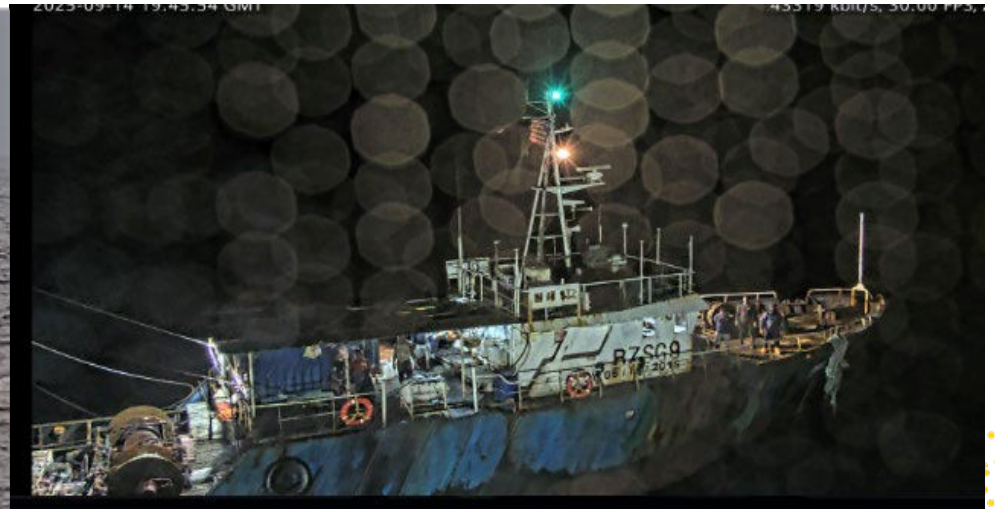
- Ratification of the FAO port states measures agreement.
 - Liberia also has joined the Fisheries Transparency Initiative (FiTI)
 - Liberia also endorsed the Global Charter for Fisheries Transparency
 - Liberia further ratified the Biodiversity Beyond National Jurisdiction (BBNJ)
 - Liberia has developed and is implementing a strategic for the implementation of the 2009 FAO agreement on port state measures
 - Establish PSMA interagency MoU
 - Effective inspectorate program
 - Liberia has identified and signed MOU with countries in whose ports Liberian flagged vessels frequently call.
 - Liberia is up to date with its reporting obligation with RFMO that Liberia is a contracting party (CP) and cooperating non-contracting party (CNCP). Some of the RFMO we are up to date with are ICCAT, IOTC, WCPFC, IATTC.
 - All list of vessels licensed by NaFAA is published on its website
- 

New Technology in monitoring

Quartermaster enhances:

- Number of vessels detected by category automatically
- Clear visual and video images of vessels detected
- Number of vessels detected by the national flag
- Number of detections by sensors


[Quartermaster Web App](#)



Industrial Aquaculture Off-Taker Farms-\$35
million United States Dollars- Four Off Taker
Farms



Production Outputs- Projected Annual Targets per hub

- Table fish- 8,000- 12,000 MT
 - Fish Feed- 10,000 MT
 - Processed Fish- 60-70% of harvest
 - Fish Oil- 500-700 MT
 - Fish Powder- 800-1,200 MT
 - Fish Chips- 1,000 MT
- 

Business Potential Outcome

Service & Market Outputs


- Reliable year-round fish supply
- HACCP-certified processing
- National cold chain coverage
- Outgrower integration (minimum 1,000 farmers)

Ancillary Revenues

- Mini restaurants
- Cold storage leasing
- Logistics services
- Training & consultancy services

REVENUE STREAMS FOR PRIVATE CONCESSIONNAIRE

Core Revenues

- Sale of fresh & frozen fish
 - Sale of processed fish (fillets, whole frozen)
 - Fish feed sales (internal & external markets)
 - Fingerlings sales
 - Fish oil & fish powder sales
 - Fish chips (retail & wholesale)
- 

Proposed Industrial Fisheries Port-\$30 million United States Dollars





FINAL LAYOUT



MARINE SIDE FACILITIES

1. Export Terminal (120m x 14m)
2. Floating pontoons (3x 50m)
3. Dredging (5,23,000m³) & reclamation (4,00,000)
4. Breakwater (326m) & Shore protection (580m)

LAND SIDE FACILITIES

1. Fish Landing Halls & Flake Ice Plant Building (505 sqm)
2. Fish Gear Retail Store (3 x 100 sqm)
3. Administration Office (100 sqm)
4. Retail Fish Markets - Wet (346 sqm)
5. Retail Market - Smoked / Dry (346 sqm)

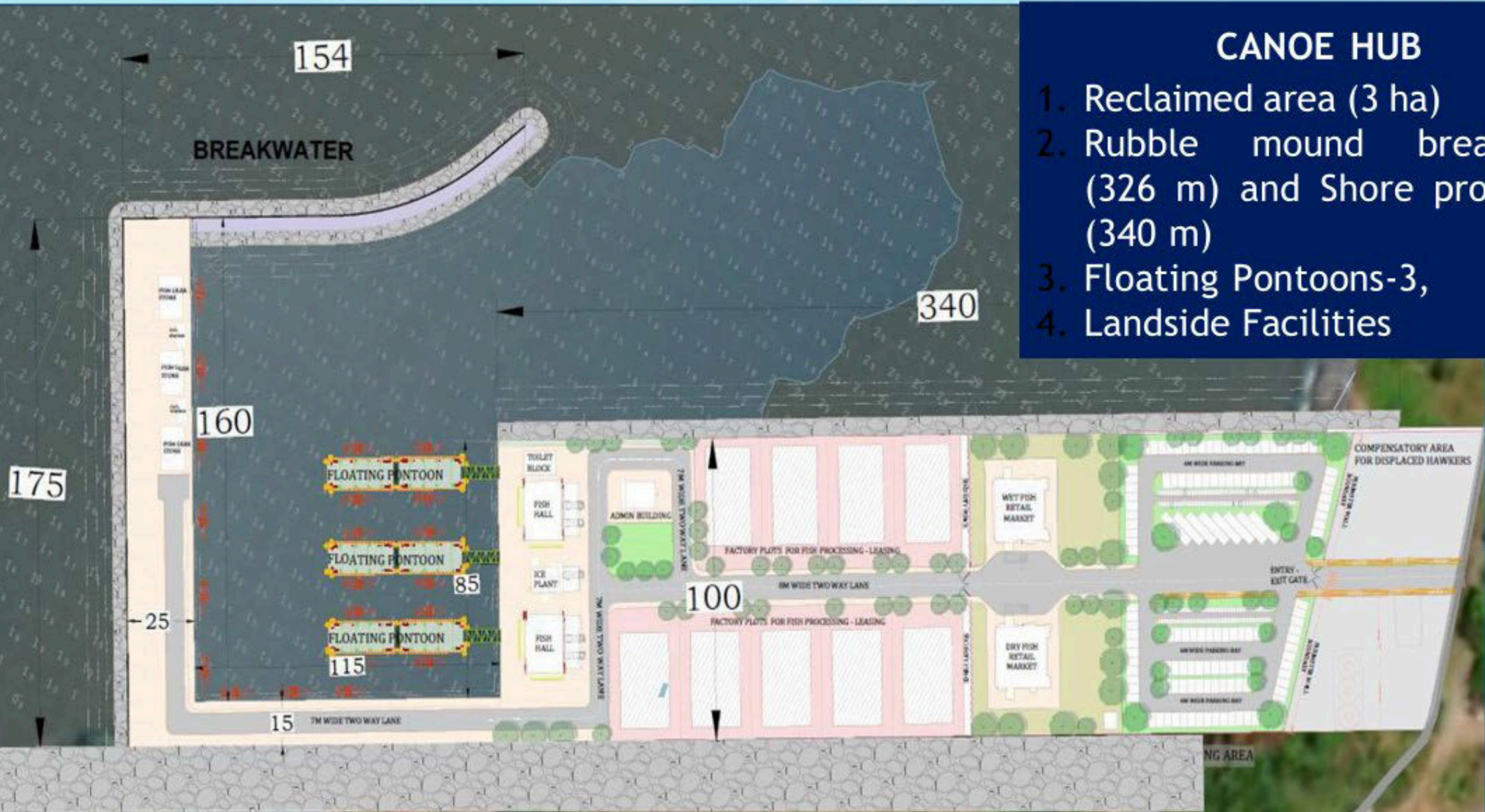


MAJOR MARINE SIDE FACILITIES



CANOE HUB

1. Reclaimed area (3 ha)
2. Rubble mound breakwater (326 m) and Shore protection (340 m)
3. Floating Pontoons-3,
4. Landside Facilities



Liberia is Ready for Business



Solar Powered artisanal vessels -72 hours power on sea

NATIONAL FISHERIES INVESTMENT CONFERENCE LIBERIA 2026

“KPONGAMA”



**H. E. PRESIDENT
JOSEPH N. BOAKAI, SR.**
President, Republic of Liberia



HON. JEREMIAH K. KOUNG
Vice President, Republic of Liberia

“UNLOCKING BLUE HORIZONS: THE FUTURE OF FISHERIES AND THE BLUE ECONOMY”

 Farmington Hotel, Harbel,
Margibi County, Liberia

MARCH 30-31, 2026
 www.nfic2026.com



THE WORLD BANK

THANK YOU



GOVERNMENT OF LIBERIA || NATIONAL FISHERIES AND AQUACULTURE AUTHORITY



Need to Apply

Register Now

Login

Login Here

Check Application Status

Enter Application No.

Check Status

