

LIBERIA – EU BUSINESS FORUM

**De-risking your supply chain when
producing, investing, or sourcing from
Liberia**

Sandra Razanamandranto
Regional Engagement & Communication Director
Preferred by Nature



Agenda

- Overview of Preferred by Nature
- Concrete cases
- Q&A



Worldwide presence

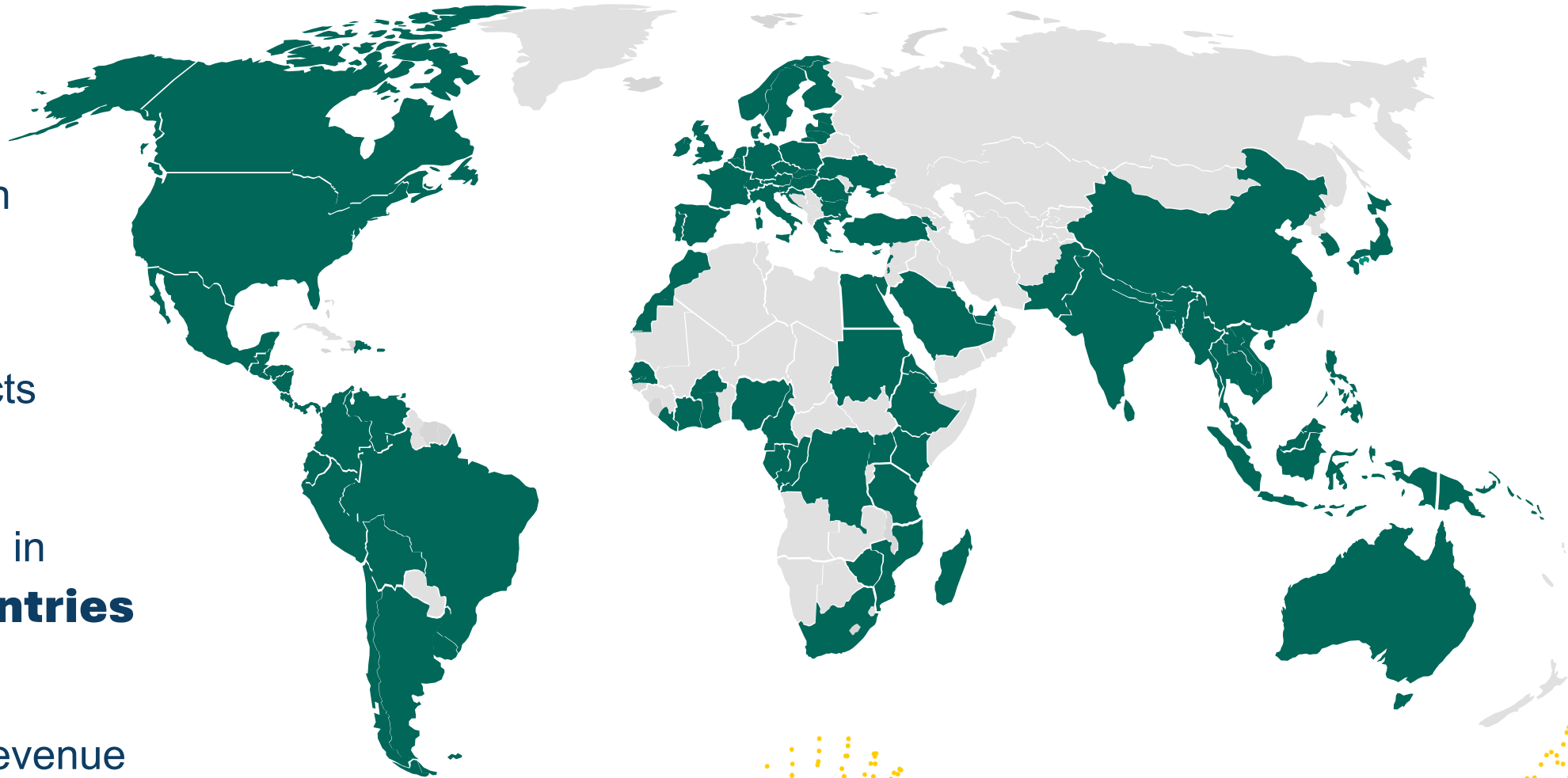
International Organisation,

Headquarter based in Denmark

30+ years of impacts

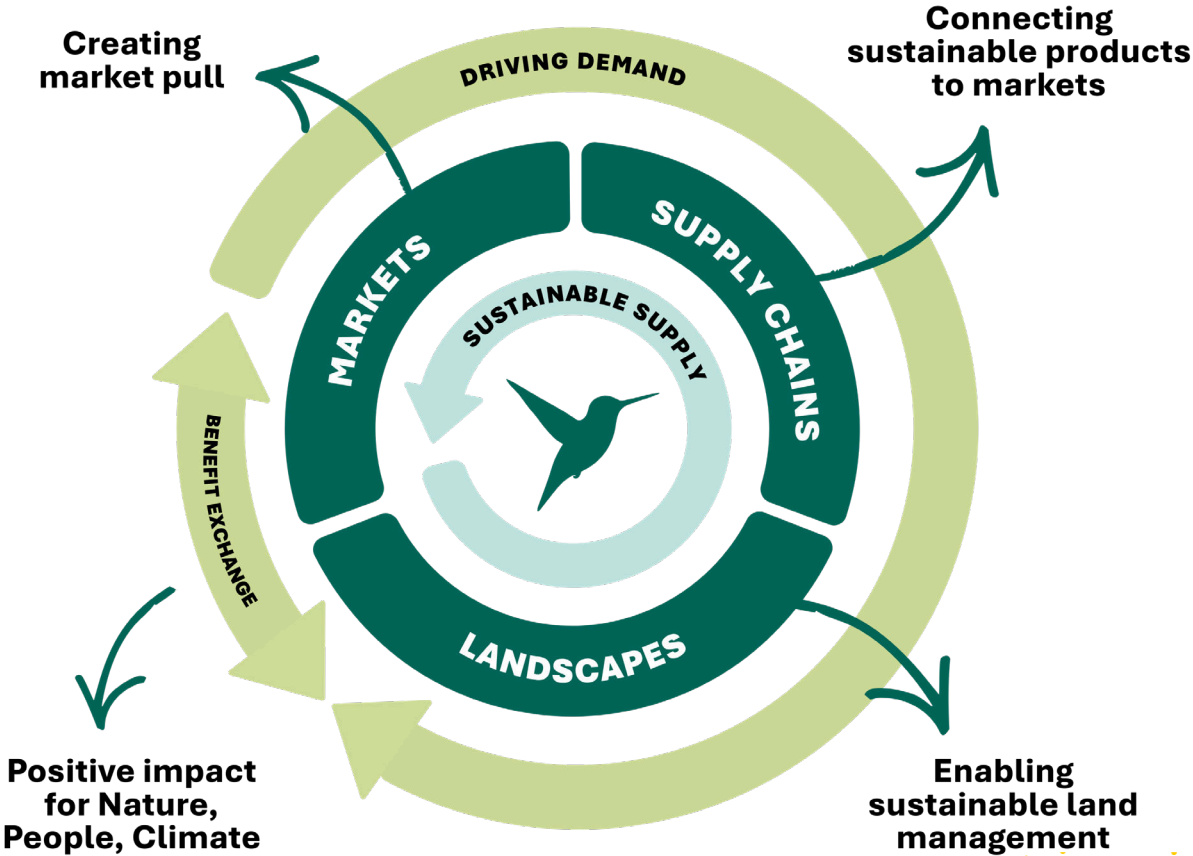
350+ staff working in more than **100 countries**

28 M EUR annual revenue



Our Theory of Change

Driving **sustainability** by transforming **markets**



Certified by Preferred by Nature

Preferred by Nature



Carbon Footprint Certification

Ecosystem Restoration

Regenerative Agriculture

Closer To Nature Forestry

Responsible Biomass Programme

Sustainable Travel

Forestry



Agriculture



Climate



Other



Preferred by Nature and EUDR



10+ years as an EU Monitoring Organisation under the EU Timber Regulation (EUTR)



200+ companies supported in their EUDR compliance journey



30+ EUDR seminars & webinars delivered worldwide



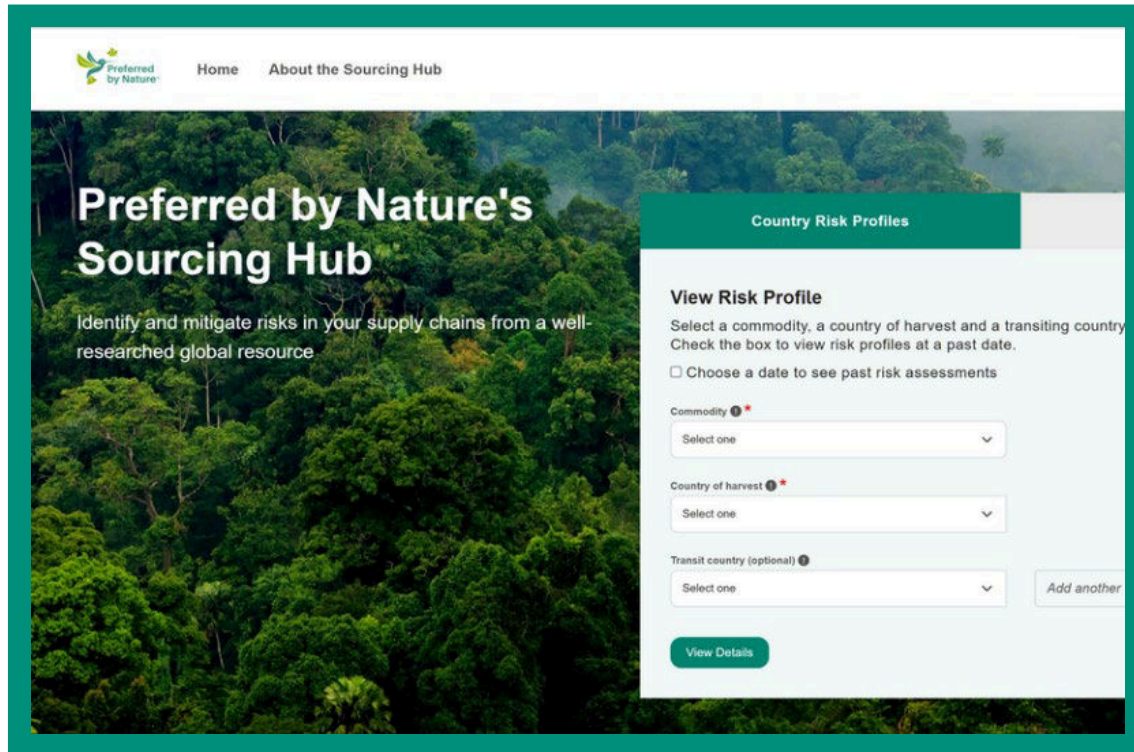
30+ years of supporting responsible supply chains in 100+ countries



Sourcing Hub

Understand and manage **sustainability risks**

across agricultural and forestry supply chains / supporting decisions from production through processing, transport and trade



Sustainability risk assessment data



Key legislation



Risk mitigation



Sustainability tools & resources



Background country information



Scan to access



Sourcing Hub

Description of source types

Source types describe the possible origins of a commodity from within a country. Knowing the "source type" that timber originates from is useful because different source types can be subject to different applicable legislation and have attributes that affect the risk of non-compliance with the legislation.

CFR source

25, updated 2024

Armed Conflicts

There are currently no armed conflicts in Liberia according to the Council on Foreign Relations' Global Conflict Tracker

Voluntary Partnership Agreement

No Data

Certifications

FSC certified area: 0 ha, updated April 1, 2023

Bans & Restrictions

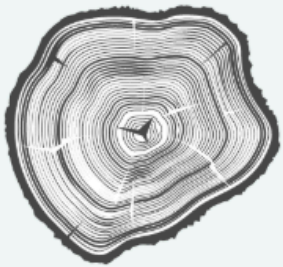
Log export ban: 2003-2006, UN Security Council-imposed sanctions on timber exports from Liberia

Risk Species

Name	CITES I	CITES II	CITES III	IUCN Redlist	Special attention
No records found					

Timber

Save your supply chain for quick access to risk data in notifications about changes in the risk profile of countries. You need to create a supply chain for each country of origin.



Liberia

Tree cover loss

Source: Global Forest Watch, 2021

Tree cover loss". Accessed on 01/01/2023 from www.globalforestwatch.org. The graph shows tree cover loss, defined as stand level replacement of vegetation greater than 5 meters in the country. Note that tree cover loss is not the same as "deforestation" – tree cover loss includes change in both natural and planted forests. The data from 2011 onward were produced with an updated methodology. Comparisons between the original 2001-2010 data and future years should be made with caution.



Supporting rubber sector in Liberia

- **Organisation profile:**



- **Need:** Promoting sustainable rubber production in Liberia to attract niche markets and meet buyers' requirements
- **Our work:** Leading the development of an FSC interim Forest Stewardship standard for Liberia – *to be published in March 2026*



Supporting rubber sector in Liberia

- **Organisation profile:** multinational rubber and palm oil company with rubber concessions in Liberia – € 862.5 M Turnover
- **Need:** Assess their conformity against EUDR in order to export into EU market
- **Our work:** Field verification against EUDR indicators



Supporting rubber sector to seek suppliers in West Africa

- **Organisation profile:** EU based multinational motor vehicle manufacturer – \$ 130 Billion Turnover

■ **Need:**

- To understand their gaps in their current sourcing processes
- A tool for identifying and collecting information from their suppliers

■ **Our work:**

- Benchmarking their current procedures
- Developing a supplier information gathering tool



Supporting rubber sector in Liberia

- **Organisation profile:** EU based company that produces high-quality rubberwood biomass for use in industrial heating, power generation, and bio-refining.
-
- **Need:** Want to become the global Energy Hub for Sustainable Biomass
-
- **Our work:** Supplier Audit against Sustainable Biomass Program - SBP



Supporting Palm Oil sector in Liberia

- **Organisation profile:** multinational agrobusiness company operating in Liberia with 14 000 ha of palm oil concession
-
- **Need:** Be trained in sustainable palm oil production and seek support to develop their Sustainability policies
-
- **Our work:**
 - Development of Corporate Social Responsibility (CSR) and Sustainability policies & capacity building for Palm Oil Industry
 - Field verification of their current practices



Supporting cocoa sector to seek suppliers in West Africa

- **Organisation profile:** EU based multinational cocoa traders– \$ 177 Billion Turnover
-
- **Need:**
 - Have their internal team trained in sustainable sourcing
 - Support to develop and verify their due diligence procedures (incl. Farmer Data Collection, Geolocation Data Collection, Risk Assessment, Risk Mitigation etc.)
-
- **Our work:**
 - Training workshop for their staff
 - Development of their full Due Diligence system
 - Support in collecting field information



Supporting timber sector to seek suppliers in West Africa

- **Organisation profile:** EU based wood flooring and wooden furniture manufacturer
-
- **Need:**
 - Need to verify that their suppliers are in conformity with EUDR
 - Need to put in place a traceability system allowing them to trace back their products
-
- **Our work:**
 - On the group supplier chain risk assessment against their own sustainability requirements
 - Development of their Traceability system



De-risking your investment

Main challenges

- Navigating complexities of **legislation** and differences in **interpretation**
- **Non-compliance** to national legal framework
- Access to **Supplier Information** on origin and production time, including geolocation data
- Access to full **traceability** ensuring first-mile
- Risk of **mixing** in the supply chain

Risk Mitigation actions

- Develop **strong procedures**
 - Gathering **more information**
 - **On-site verifications**
 - Use of **certification**
 - Train/support your suppliers
- 

Trusted by Organisations worldwide



Get in touch with us

Sandra Razanamandranto
Director - Regional Engagement &
Communications

Tel. + 33 06 14 34 81 47
sr@pbn.org

Nicolas Pillet
Senior Regional Manager – Western
Europe

Tel. + 33 06 70 04 78 05
npi@pbn.org



www.preferredbynature.org

*FSC™ A000535 / FSC accredited certification body
PEFC/09-44-02*

About the EU
Deforestation Regulation

